

2018



erga

ARCHITECTS,
PLANNERS &
CONSULTING ENGINEERS

RESIDENTIAL PROJECTS' EXPERIENCE

38 YEARS OF ARCHITECTURE...



A WORD FROM THE CHAIRMAN



"Erga has been in the Middle Eastern region for more than 30 years. Its expansion that started from Lebanon is persistent for many different reasons. In this book we decided to share with you Erga's key success factors and mainly highlight one factor that made erga what it is today. Some will be surprised but indeed it is true. Curiosity made Erga but not alone.

Persistence in being curious is the major key success factor. We are proud of being curious and we want each person working with us to have this qualification. We mean by curiosity its positive side, the seek to knowledge and to the new trends in architecture and related fields. All great minds that touched the humanity have been curious in a way or another like Christopher Colombus, Newton Le Corbusier and many others. That is why we train our people to be curious always searching for the best alternatives."

Elie Gebrayel
CEO_Chairman

A handwritten signature in black ink, consisting of a series of loops and a long horizontal stroke extending to the right.



VISION

"Leading the architecture of our time onto new dimensions, focusing on a sustainable development to meet present and future needs."

MISSION

"Creating from Space a lifestyle committed to green, relying on the know-how, the professional support and the state-of-the-art technology."

VALUES

Sustainability, Creativity, Ethics, Professionalism, Reliability, Client Satisfaction, Employee Satisfaction, Accomplishment, Aim to Excellence.

HISTORY



From its inception in the 1980s, Erga, a one hundred percent Lebanese company has built a reputation of integrity and solid customer relationship along the way. It is widely known among the developer and real estate community of the region for its accountability, unique service, out-of-the-box thinking and project diversity. But all this happened with the efforts of Elie Gebrayel and Randa Faddoul, two young students who enrolled in architecture at the Lebanese University and despite the bad situation in their country, Lebanon, shared their dreams, got married and brought Erga to life year 1980 on the rooftop of a building. Erga carries their names and stands for "Elie & Randa Gebrayel Architects".

During the Lebanese war, Erga strived to survive the situation, working on a variety of projects, among them Erga's offices. When getting in and out the country became hard, Erga Paris

was born, a liaison office, connecting Lebanon to the rest of the world. That year 1983, the first revolutionary step for Erga was to be one of the few architectural offices to move to drafting on computers, project Rocas Doradas in Spain was the first project to be drawn solely on AutoCad version 1.0.

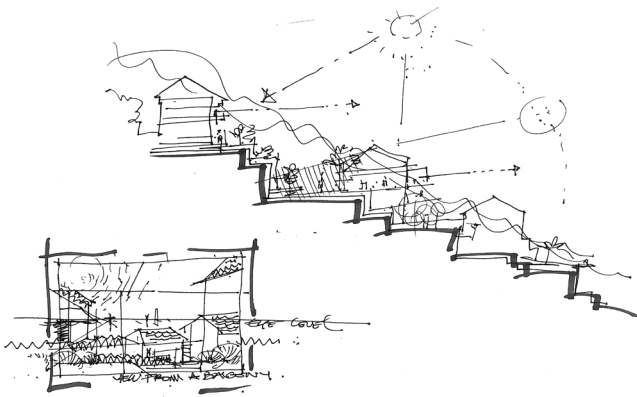
During that time, Erga's working hours remained normal in Lebanon but presence at the office depended solely on the situation. And it is during that time that Erga had its first laptop.

In 1989 when "war of liberation" was declared, it reached Erga's door and at one point Erga's staff was stuck in the office for days in a row without resources. But when the civil war ended in 1990, Lebanon entered its stable period and hence an economic boom emerged.



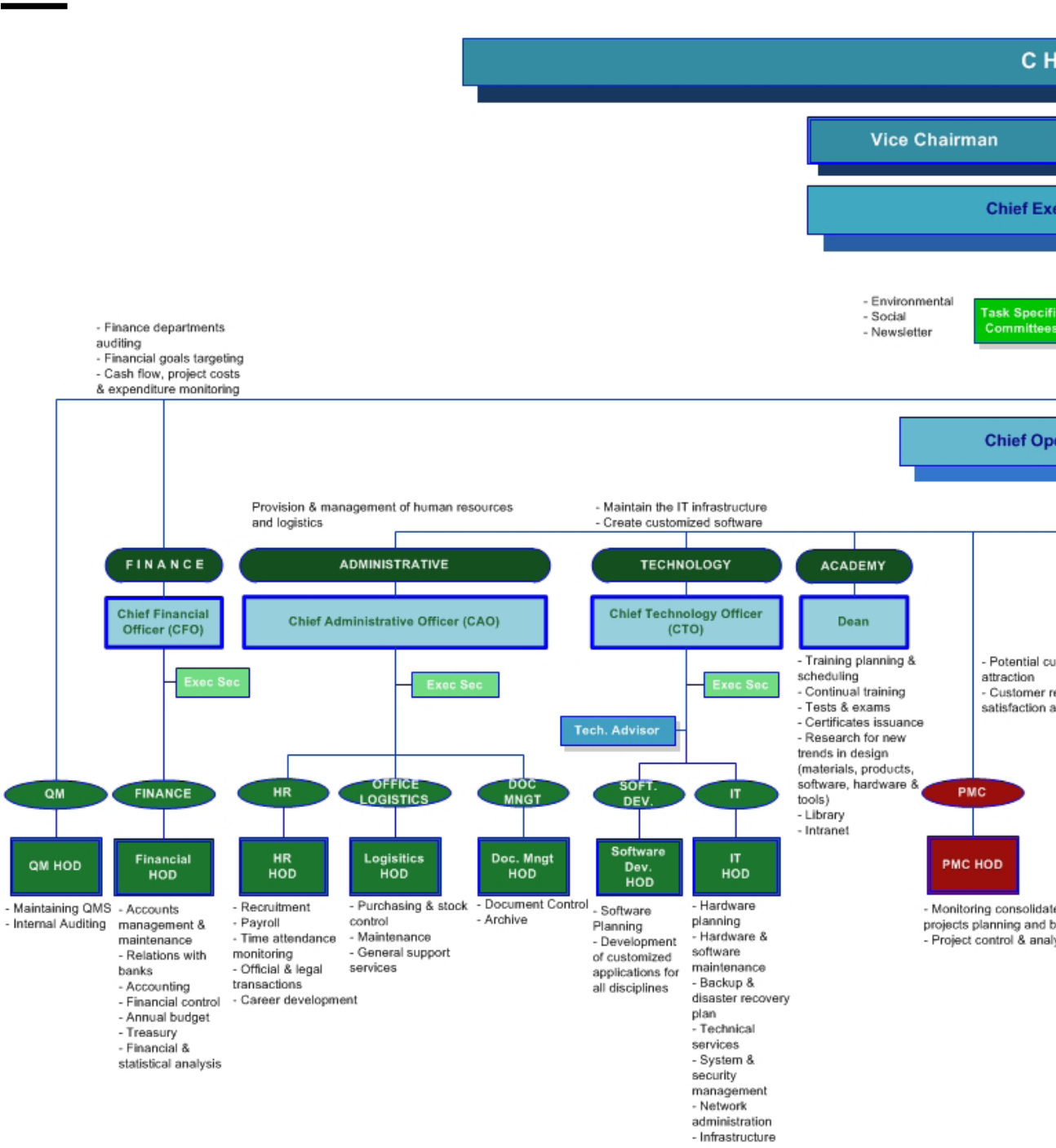
The reconstruction of Lebanon started and Erga International is founded and its projects got bigger and bigger more specifically when Solidere company was founded and over the next few years Erga landed itself the design of 27 buildings and supervised over 35 other sites.

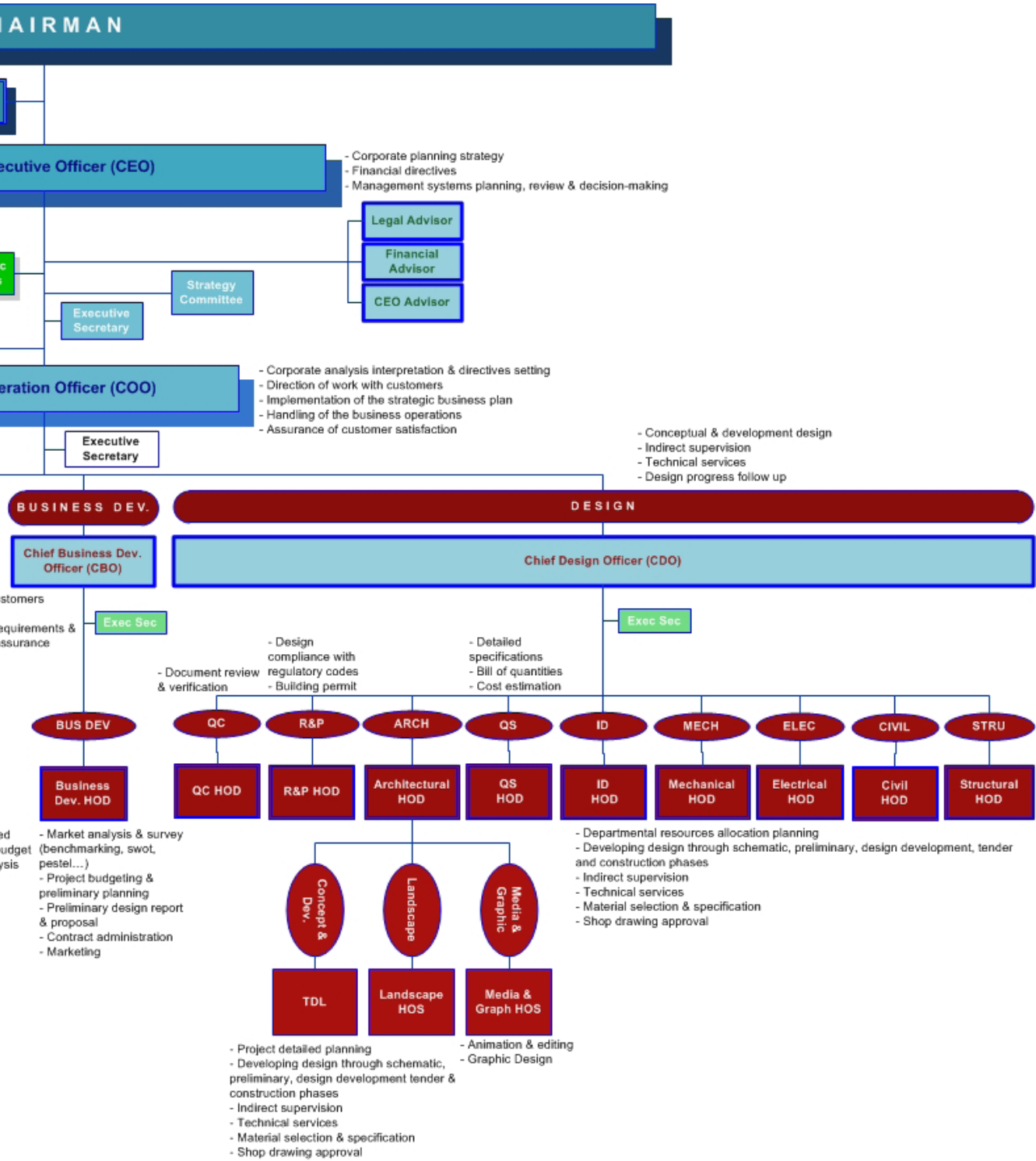
Afiteck is founded, then Erga Holding and Erga Management and the projects spread to Dubai, Riyadh and Jeddah with several won competitions which pushed the foundation of Erga Saudi Lebanese in Riyadh and Jeddah and Erga Progress in Dubai. In 2005 even with the unstable situation Erga kept going and worked with several famous international architects like Architectonica, Arata Isozaki and many others and Erga Bahrain was been founded.



2007 was the golden year for Erga that kept going working on landmark projects all over the Middle East and Africa such as Sama Beirut, BeitMisk, Sama Mekka, Riyadh municipality HQ and Zenith tower and MAGERGA was founded followed by H2 Holding, Erga Qatar, Erga Algerie, Erga-Pro in Nigeria, Erga Egypt and Erga Group Syria with 2 branches in Damascus and Lattakia. By 2010 Erga sets forth a 5 year plan to go green, aiming that in five years no project of Erga will come out without any lead certification. Among Erga's highlight projects after 2010 were Credit Libanais HQ, the Lebanese national library and the green river of Beirut to name but a few. This couldn't be possible without the people, who are the foundation of Erga, the building rocks of its success throughout the years.

TOP MANAGEMENT / ORGANIZATION CHART





TOP MANAGEMENT / PERSONNEL



ELIE GEBRAYEL

Architect
Chairman
Chief Executive Officer_CEO



RANDA GEBRAYEL

Architect
Vice Chairman



ELIE ABOU GHAZALE

Civil Engineer
Chief Operating Officer_COO
Partner



PAUL ABI DERGHAM

Architect
Chief Design Officer_CDO
Partner



FOUAD ABOU RJEILY

Civil Engineer
Chief Technology Officer_CTO
Partner



FADI BOUSTANY

Architect
Chief Business Dev. Officer_CBO
Partner



ELIE CHEBLY

Architect
Chief International Officer_CIO
(Erga Qatar Branch)
Partner



JOSEPH RAHAL

Chief Financial Officer_CFO



RANY GEBRAYEL

Chief Administrative Officer_
CAO



PIERRE SAGHBINI

Architect
Branch Manager
(Erga Saudi Riyadh Branch)



JOSEPH SAWAYA

Architect
Branch Manager
(Erga Progress Dubai Branch)

01

SAMA BEIRUT Achrafieh_Lebanon

Type: Residential Complex, Commercial Complex

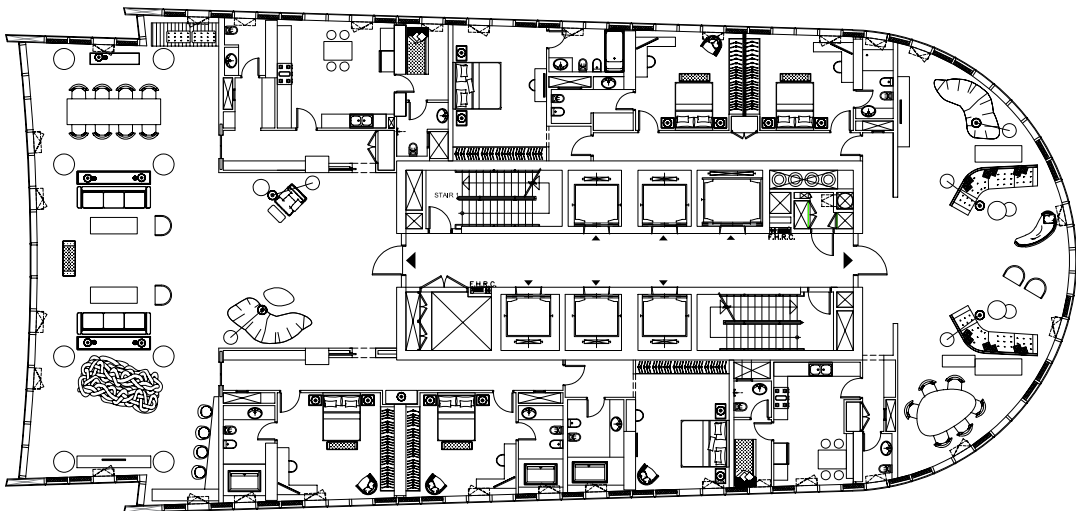
Status: Done

Built-up area: 75,223sqm

Year: 2010

Job# 1290

Ideally situated at the crossroads of Beirut's three main districts – namely, Downtown, Hamra and Gemaizeh – Sama Beirut is also a convenient short drive from Rafik Hariri International Airport.



Rising an imposing 260 meters above sea level, Lebanon's tallest tower stands 50 stories high, creating a striking presence on the Beirut landscape. Elegantly flowing upwards like a heavenly villa in the sky, the landmark building brings an unprecedented level of comfort and lavishness to the city.





SAMA BEIRUT / Site Photos



Redefining luxury living, Sama Beirut towers gracefully over the city skyline, leaving an indelible and unforgettable presence that is noticeable from land, sea and air.



SAMA BEIRUT / Site Photos

02

ACHRAFIEH 4748

Achrafieh_Lebanon

Type: Residential

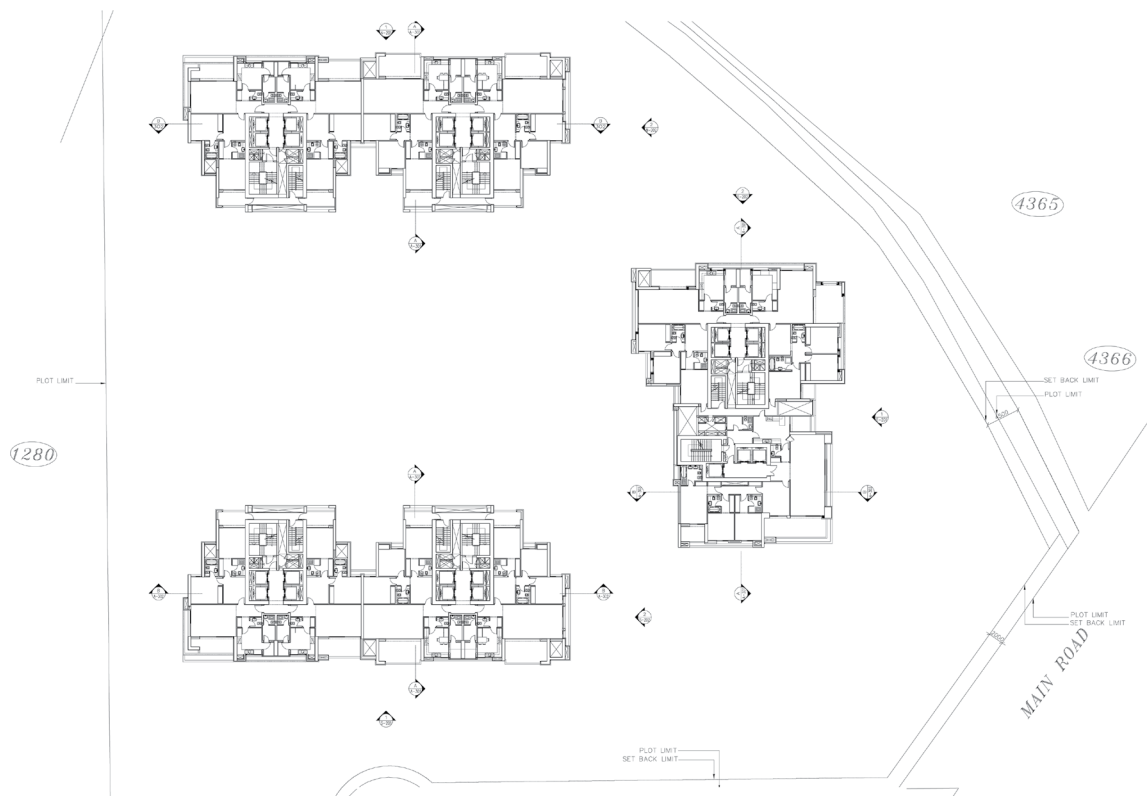
Status: Done

Built-up area:93,647sqm

Year: 2010

Job# 1378

The project consists of 3 high rise buildings located in Achrafieh in underdeveloped area surrounded by green space. The three towers are for residential purposes and are composed of simplex apartments of two bedrooms, three bedrooms and 4 bedrooms units with areas varying from 220 m2 up to 380 m2 (including circulation) and 621 cars parking spaces. In addition the project includes a commercial area of 515 m2, a club house, 2 swimming pools, a recreational area and a tennis court.







ACHRAFIEH 4748 / Site Photos

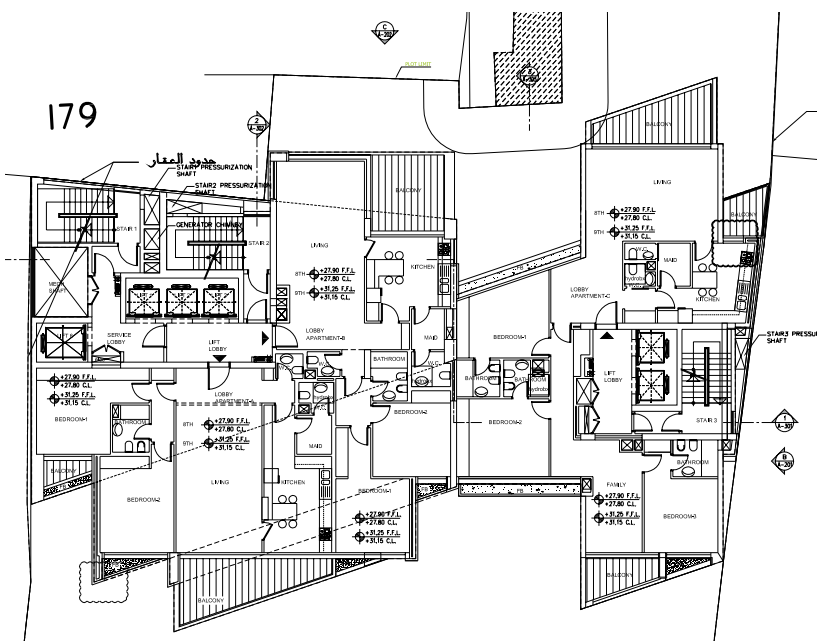


03

KLINK BUILDING
Achrafieh_Lebanon

Type: Residential
Status: On Hold
Built-up area: 5,326sqm
Year: 2010
Job# 1677

The attractive klink building in the heart of Achrafieh, is characterized by the warmth of its material, the abundance of greenery on its elevations, and its elegant and strong presence within its context. When this complex project started, it ended up at the very beginning, a result of all the constraints the site imposed, and it seemed hopeless to find any order to govern it; but after an elaborate design process, an architectural language was reached able to give harmony and order to all the different zones of the project.





03

ACHRAFIEH 996

Achrafieh_Lebanon

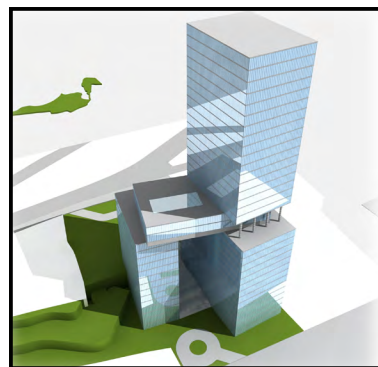
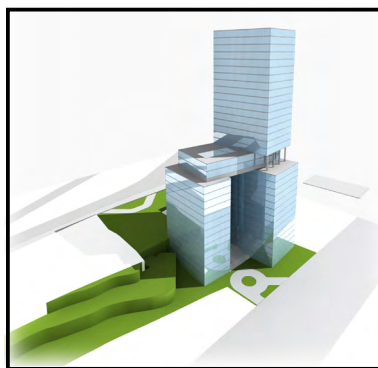
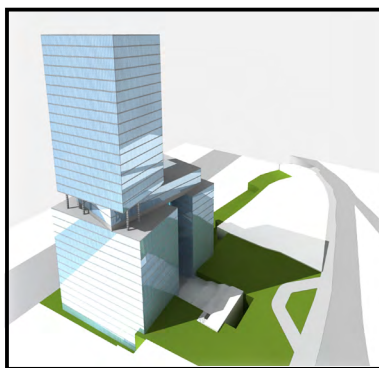
Type: Residential complex, Commercial complex

Status: Cancelled

Built-up area: 83,395sqm

Year: 2014

Job# 2332

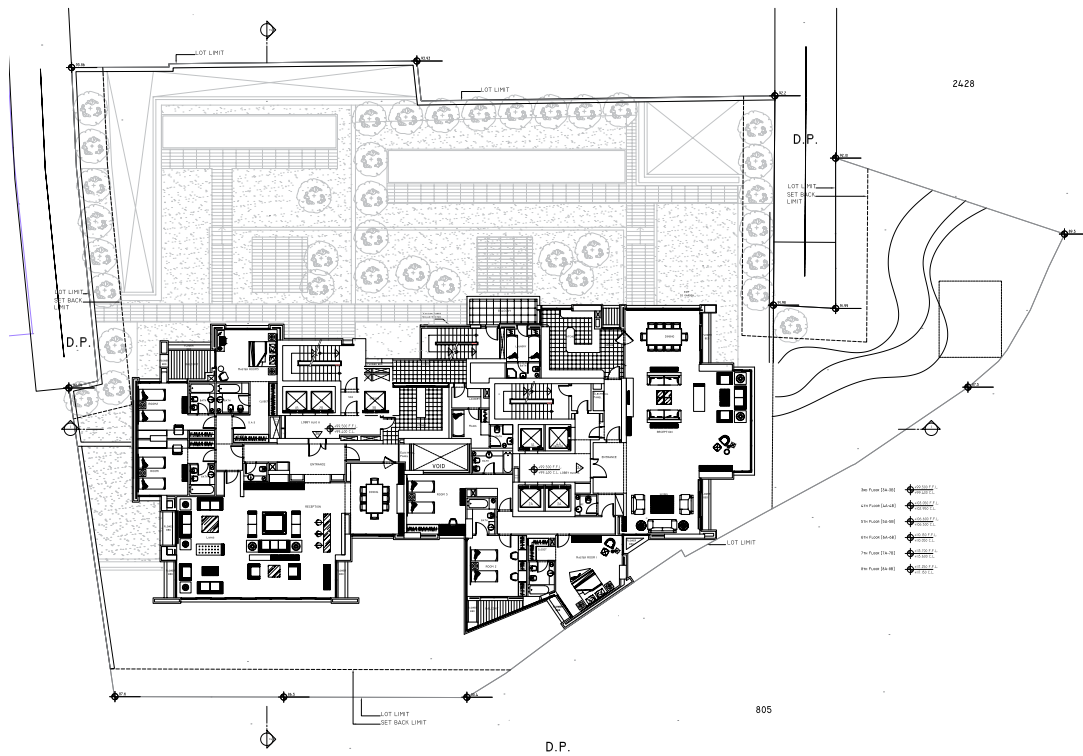




04

ZENITH TOWER
Achrafieh_Lebanon

Type: Residential
Status: Done
Built-up area: 29,057sqm
Year: 2007
Job# 1302







ZENITH TOWER / *Site Photos*

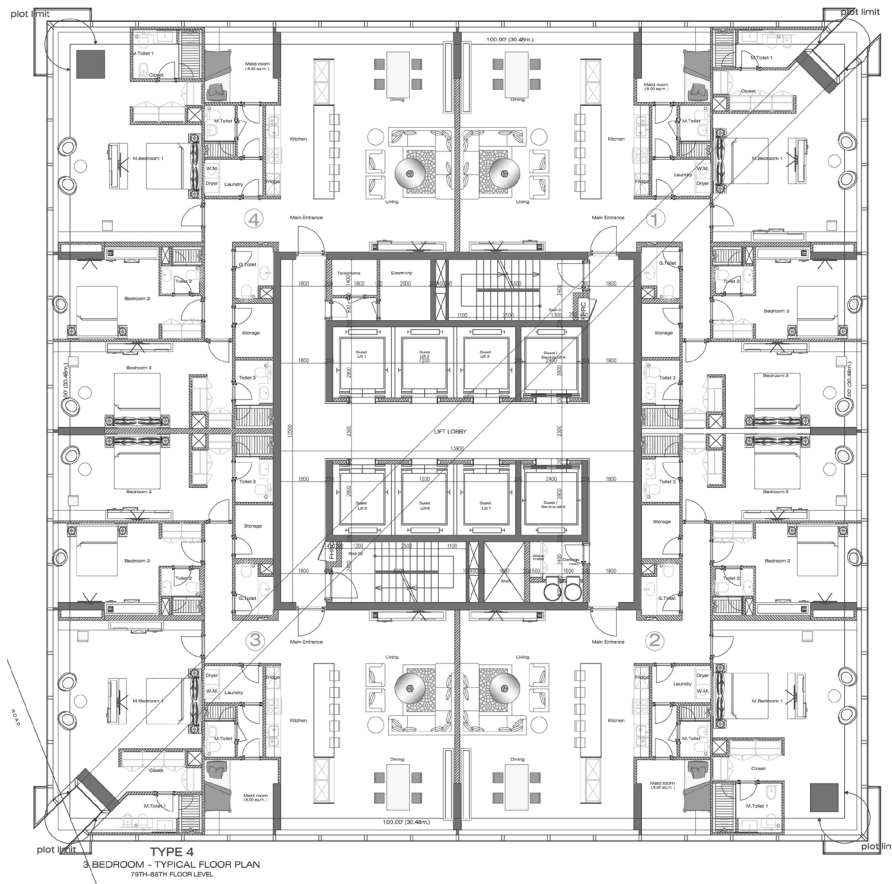


ZENITH TOWER / *Site Photos*

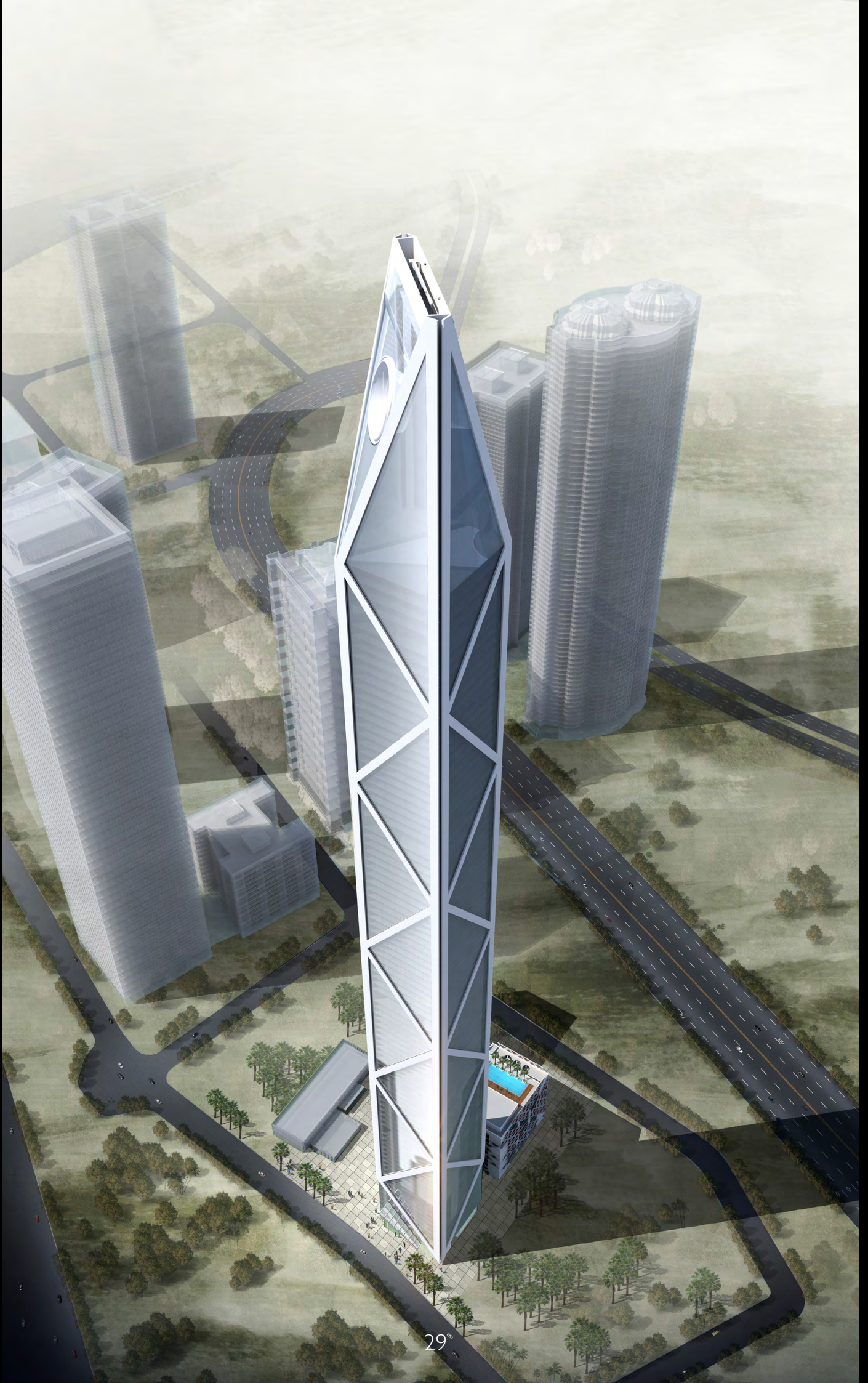
01

SRG TOWER
Dubai_U.A.E.

Type: Residential
Status:
Built-up area:
Year: 2014
Job#



88th Floor Plan



ERGA WORLDWIDE



BEIRUT / LEBANON

Naccache, Mar Mansour street,
Gebrayel building

Tel +961 4 524 124
Fax +961 4 524 224

P.O.box 70344 antelias,

erga@erga.com

DOHA / QATAR

Al Sadd, Suhaim Bin Hamad street,
Al Manaa Towers Bldg

Tel: +974 4444 6800
+974 4444 7800
Fax: +974 4444 6300

P.O.box: +974 4444 6300

erga@ergaqatar.com

RIYADH / SAUDI ARABIA

Saudi lebanese co. for project management
Al Olaya street, al akaria center II, 3rd Fl., 302

Tel +966 1 419 0044
Fax +966 1 419 1044

P.O.box 301539
Riyadh 11372 K.S.A.

erga@ergasaudi.com

JEDDAH / SAUDI ARABIA

Saudi lebanese co. for project management
Madina Road, Business Center, 2nd Fl., 213

Tel: + 966 (12) 6577827
Fax: + 966 (12) 6579038

P.O.box: 136743,
Jeddah 21313 K.S.A.

erga@ergasaudi.com

MANAMA / BAHRAIN

Al Hooraa, Road 1912, Bldg 389, Block 319,
Office 32

Tel: +973 17 292528
Fax: +973 17 292537

P.O.box: 20225
Manama Bahrain

erga@ergabahrain.com

DUBAI / UNITED ARAB EMIRATES

Al Nasr Plaza Offices, 4th Floor, Office No. 401 & 402
Oud Metha, Bur Dubai, Dubai - U.A.E.

Tel.: +971 4 3575557
Fax.: +971 4 3575556

P.O. box.: 30509
Dubai U.A.E.

erga@ergaprogress.com

www.erga.com
