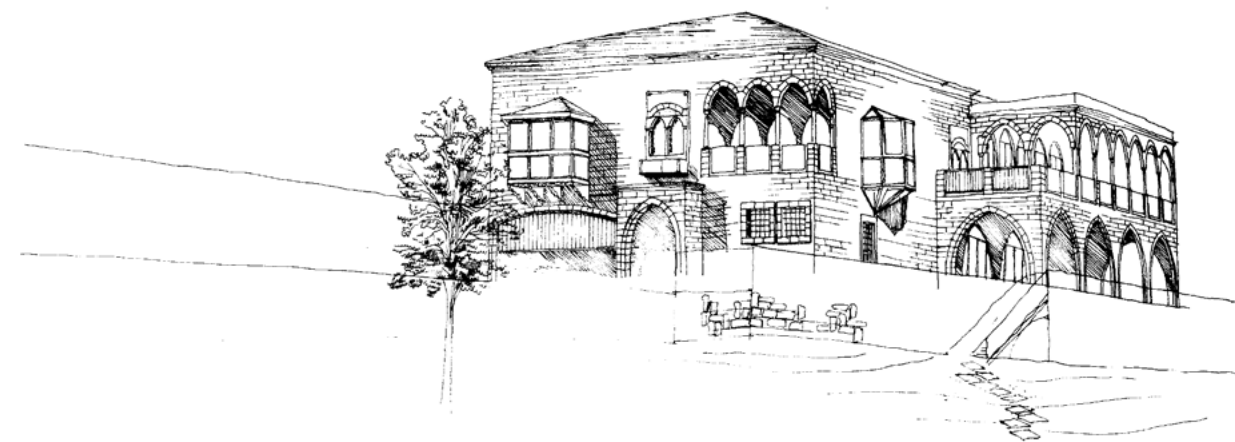


**erga** ***CULTURAL***  
PROJECTS' EXPERIENCE®



**36 YEARS** OF ARCHITECTURE...

TABLE OF CONTENTS

A WORD FROM THE CHAIRMAN.....7

HISTORY .....8

TOP MANAGEMENT ORGANIZATION CHART..... 10

TOP MANAGEMENT PERSONNEL ..... 12

SELECTED PROJECTS...

SMASH ACADEMY ..... 17

AL MANAMA SCHOOL ..... 19

MAKKAH SCHOOL..... 21

INT’L COMMUNITY SCHOOL ..... 23

NURSERY & SCHOOL .....25

MUDUN UNIVERSITY .....27

EMIRATES BRITISH NURSERY MOTOR CITY .....29

NORD ANGLIA COLLEGE ..... 31

EDUCATIONAL COMPOUND ..... 33

AIN KHALID SCHOOL ..... 35

UNIVERSITY OF CENTRAL ASIA ..... 37

UNIVERSITY OF CENTRAL ASIA ..... 39

AUD SPORTS FACILITY ..... 41

ISLAM TODAY ..... 43

RENOVATION OF AL AHLIA SCHOOL..... 45

BASBOUS RACHANA ..... 47

PHOENICIAN MUSEUM..... 49

BEIRUT NATIONAL LIBRARY..... 51

ERGA WORLDWIDE ..... 52



## A WORD FROM THE CHAIRMAN

---

"Erga has been in the Middle Eastern region for more than 30 years. Its expansion that started from Lebanon is persistent for many different reasons. In this book we decided to share with you Erga's key success factors and mainly highlight one factor that made erga what it is today. Some will be surprised but indeed it is true. Curiosity made Erga but not alone.

Persistence in being curious is the major key success factor. We are proud of being curious and we want each person working with us to have this qualification. We mean by curiosity its positive side, the seek to knowledge and to the new trends in architecture and related fields. All great minds that touched the humanity have been curious in a way or another like Christopher Colombus, Newton, Le Corbusier and many others. That is why we train our people to be curious always searching for the best alternatives."

**ELIE GEBRAYEL**  
CEO\_Chairman

## HISTORY

From its inception in the 1980s, Erga, a one hundred percent Lebanese company has built a reputation of integrity and solid customer relationship along the way. It is widely known among the developer and real estate community of the region for its accountability, unique service, out-of-the-box thinking and project diversity.

But all this happened with the efforts of Elie Gebrayel and Randa Faddoul, two young students who enrolled in architecture at the Lebanese University and despite the bad situation in their country, Lebanon, shared their dreams, got married and brought Erga to life year 1980 on the rooftop of a building. Erga carries their names and stands for "Elie & Randa Gebrayel Architects".

During the Lebanese war, Erga strived to survive the situation, working on a variety of projects, among them Erga's offices. When getting in and out the country became hard, Erga Paris was born, a liaison office, connecting Lebanon to the rest of the world. That year 1983, the first revolutionary

step for Erga was to be one of the few architectural offices to move to drafting on computers, project Rocas Doradas in Spain was the first project to be drawn solely on AutoCad version 1.0.

During that time, Erga's working hours remained normal in Lebanon but presence at the office depended solely on the situation. And it is during that time that Erga had its first laptop. In 1989 when "war of liberation" was declared, it reached Erga's door and at one point Erga's staff was stuck in the office for days in a row without resources. But when the civil war ended in 1990, Lebanon entered its stable period and hence an economic boom emerged.



ROCAS DORADAS / SPAIN 1985

The reconstruction of Lebanon started and Erga International is founded and its projects got bigger and bigger more specifically when Solidere company was founded and over the next few years Erga landed itself the design of 27 buildings and supervised over 35 other sites.

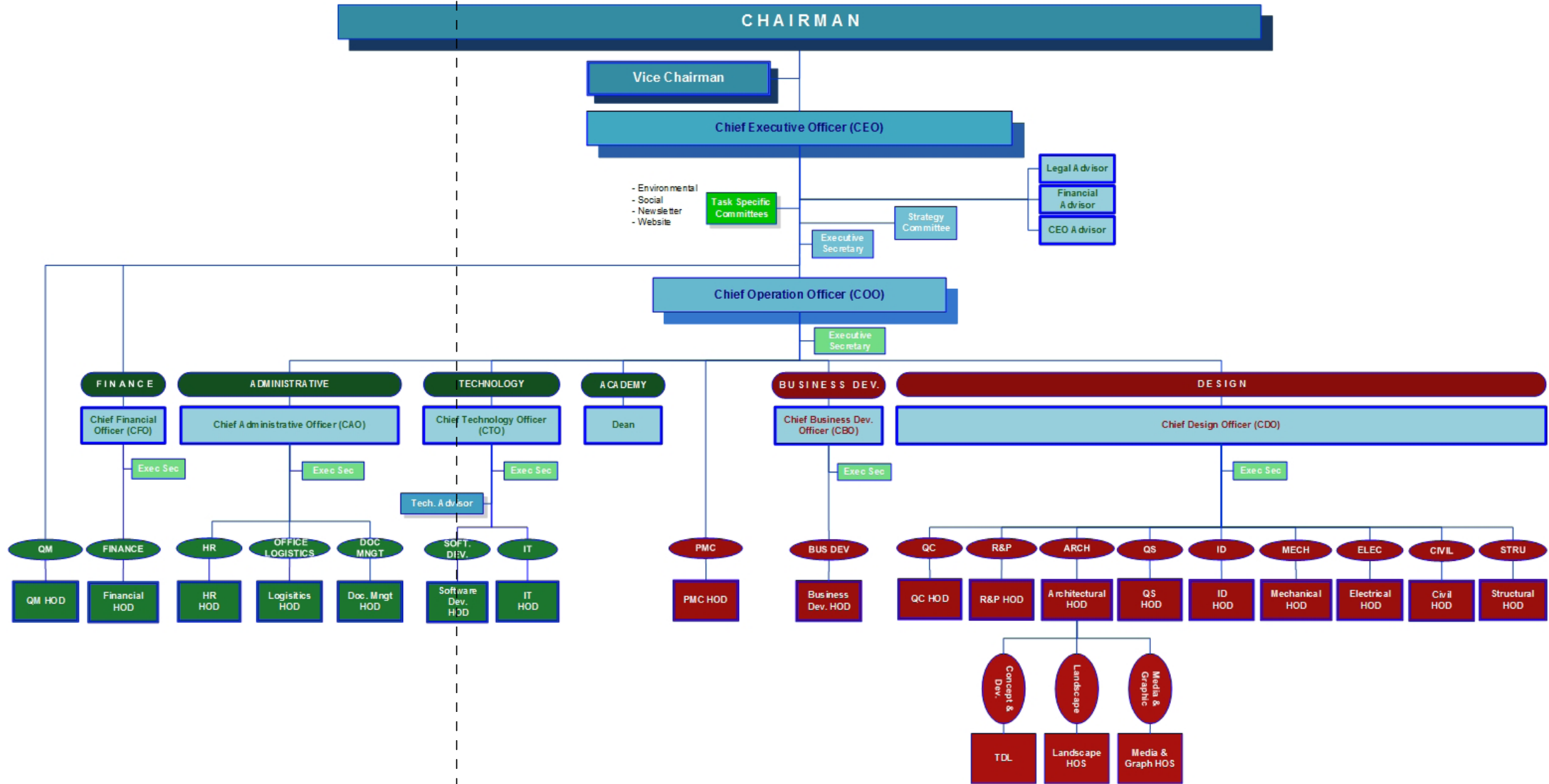


Afiteck is founded, then Erga Holding and Erga Management and the projects spread to Dubai, Riyadh and Jeddah with several won competitions which pushed the foundation of Erga Saudi Lebanese in Riyadh and Jeddah and Erga Progress in Dubai. In 2005 even with the unstable situation Erga kept going and worked with several famous international architects like Architectonica, Arata Isozaki and many others and Erga Bahrain was been founded.

2007 was the golden year for Erga that kept going working on landmark projects all over the Middle East and Africa such as Sama Beirut, BeitMisk, Sama Mekka, Riyadh municipality HQ and Zenith tower and MAGERGA was founded followed by H2 Holding, Erga Qatar, ErgaAlgerie, Erga-Pro in Nigeria, Erga Egypt and Erga Group Syria with 2 branches in Damascus and Lattakia.

By 2010 Erga sets forth a 5 year plan to go green, aiming that in five years no project of Erga will come out without any lead certification. Among Erga's highlight projects after 2010 were Credit Libanais HQ, the Lebanese national library and the green river of Beirut to name but a few. This couldn't be possible without the people, who are the foundation of Erga, the building rocks of its success throughout the years.

TOP MANAGEMENT / ORGANIZATION CHART





TOP MANAGEMENT / PERSONNEL



ELIE GEBRAYEL

Architect  
Chairman  
Chief Executive Officer\_CEO



RANDA GEBRAYEL

Architect  
Vice Chairman



ELIE ABOU GHAZALE

Civil Engineer  
Chief Operating Officer\_COO  
Partner



PAUL ABI DERGHAM

Architect  
Chief Design Officer\_CDO  
Partner



FOUAD ABOU RJEILY

Civil Engineer  
Chief Technology Officer\_CTO  
Partner



FADI BOUSTANY

Architect  
Chief Business Dev. Officer\_CBO  
Partner



ELIE CHEBLY

Architect  
Chief International Officer\_CIO  
(Erga Qatar Branch)  
Partner



JOSEPH RAHAL

Chief Financial Officer\_CFO



RANY GEBRAYEL

Chief Administrative Officer\_CAO



PIERRE SAGHBINI

Architect  
Branch Manager  
(Erga Saudi Riyadh Branch)



JOSEPH SAWAYA

Architect  
Branch Manager  
(Erga Progress Dubai Branch)

**SELECTED** *PROJECTS...*





## SMASH ACADEMY

WADI AL BANAT / QATAR  
PROJECT NO: 2686  
BUILT-UP AREA: 81 997m<sup>2</sup>  
STATUS: ACTIVE



The Smash academy project is developed on plot of 63,631sqm owned by the government and leased by Mr. Khalid Ghanim A K Khelaifi, located at Wadi Al Banat-PlotPin:70031000.

The proposed project includes the following:

- 1- School building for kindergarten, up to year 12 , that is divided into boys and girl segregated sections ; the total BUA without the basement is 25 748 m<sup>2</sup>
- 2- Accommodation building that is composed of 1 and 2 bedrooms type , whereas the total built up area without the basement is 10 535 m<sup>2</sup>
- 3- Smash academy development that is composed of spa , Health club and rehabilitation center ; the BUA is respectively 4000 m<sup>2</sup> , 10 000 m<sup>2</sup> and 3000 m<sup>2</sup> ( without the basement )
- 4- Covered tennis court that includes 4 tennis playground , the total BUA is 3 000 m<sup>2</sup>
- 5- Outdoor tennis court that consists of 12 conventional tennis courts, and 6 small courts.

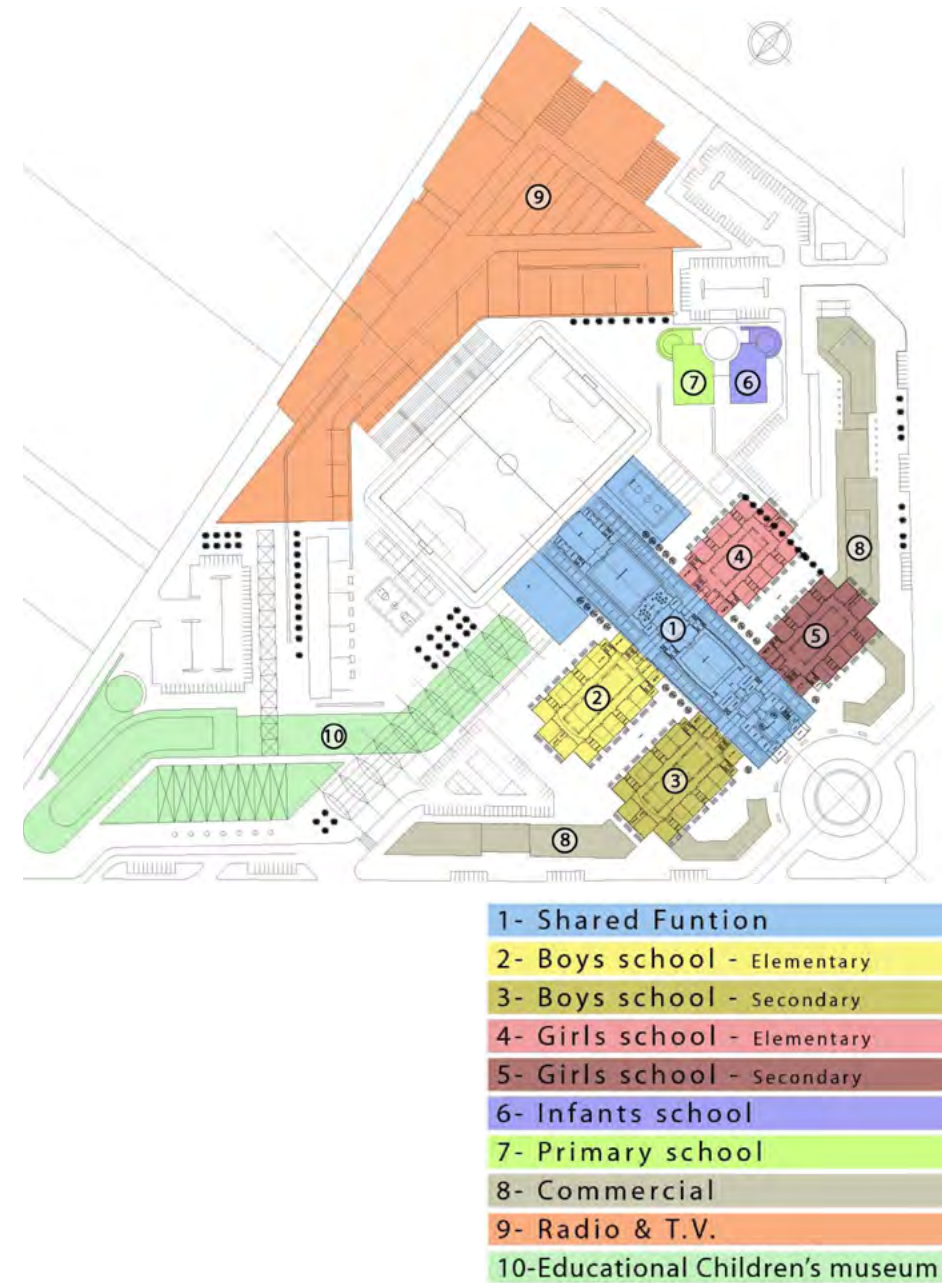
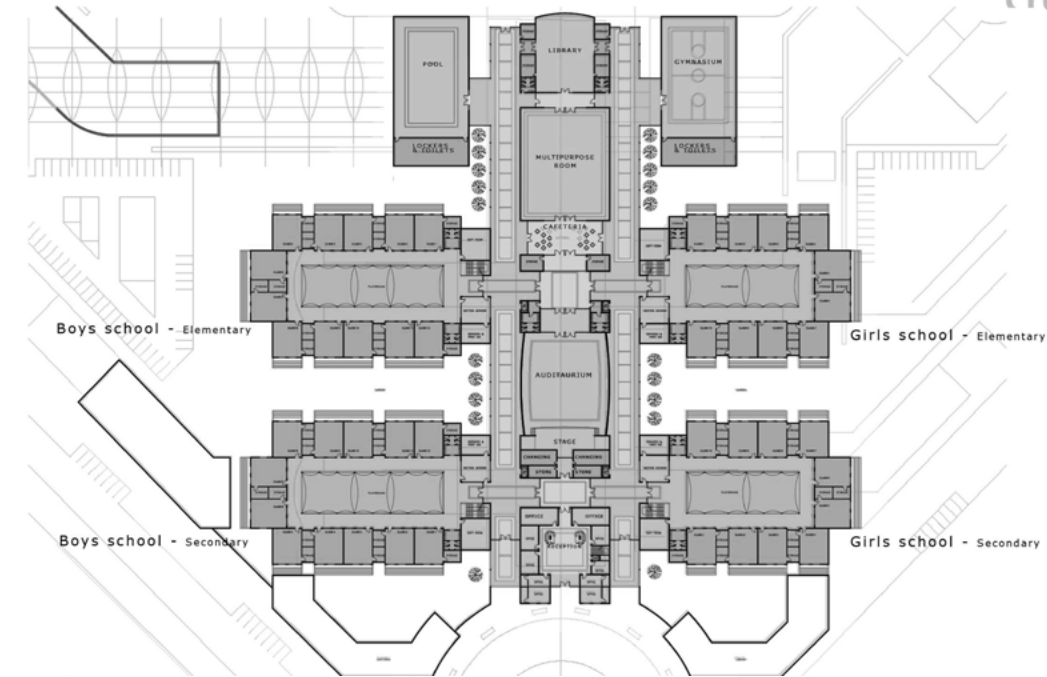
A combined basement floor is linking all the above developments and consists of parking area, MEP facilities and amenities for the school , spa and rehabilitation center; the total BUA is 24 645 m<sup>2</sup> .





## AL MANAMA SCHOOL

MANAMA / BAHRAIN  
PROJECT NO: 1126  
BUILT-UP AREA:  
STATUS: DONE







## MAKKAH SCHOOL

MAKKAH / SAUDI ARABIA  
PROJECT NO: 811  
BUILT-UP AREA:  
STATUS: DONE

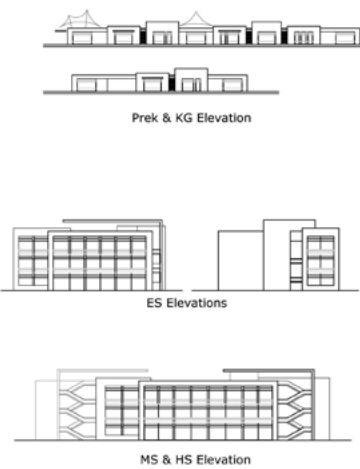






## INT'L COMMUNITY SCHOOL

DUBAI / U.A.E.  
PROJECT NO: 1277  
BUILT-UP AREA= 36512m<sup>2</sup>  
STATUS: DESIGN

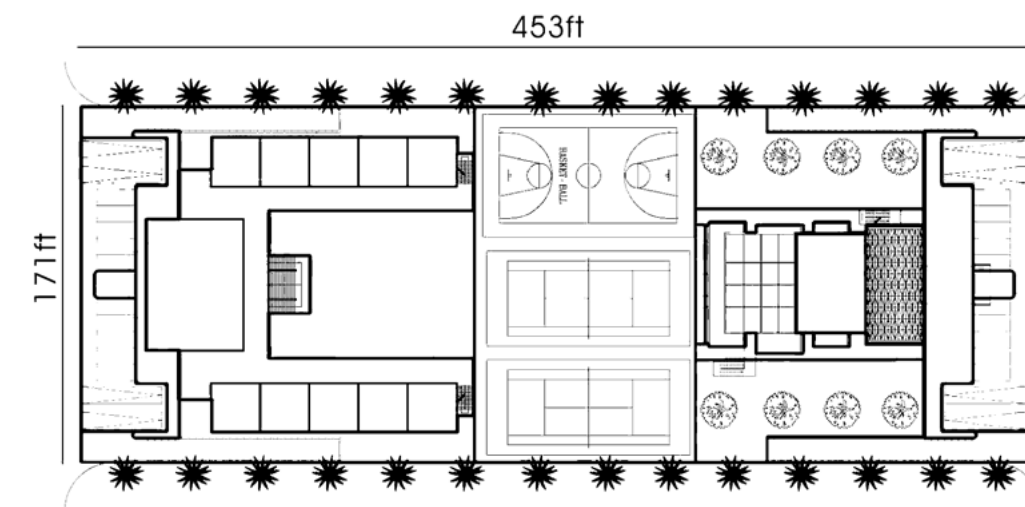






## NURSERY & SCHOOL

DUBAI / U.A.E.  
PROJECT NO: 917  
BUILT-UP AREA= 7200m<sup>2</sup>  
STATUS: DONE



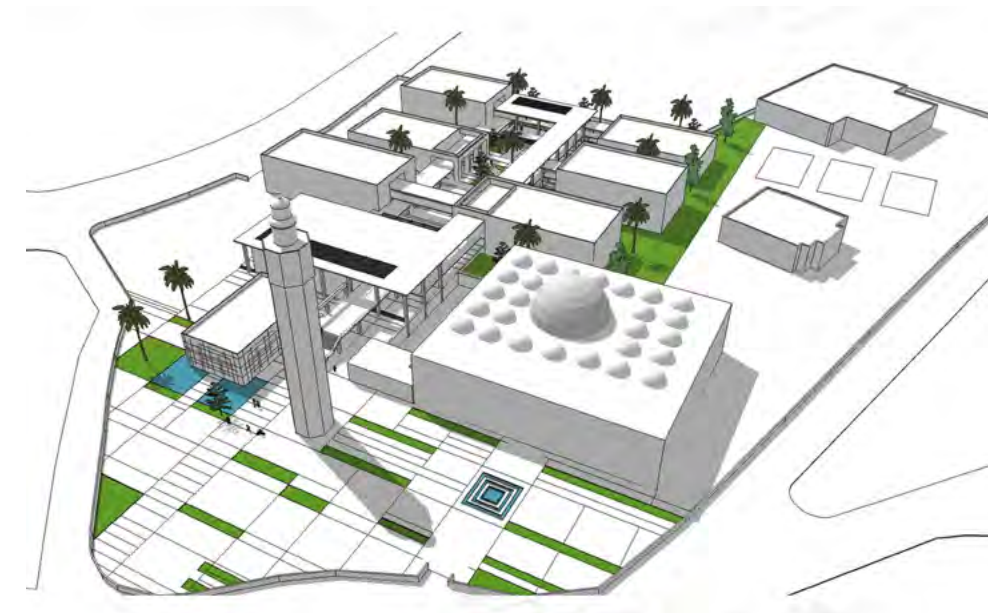




Mudun will seek to empower generations of lebanese and regional students with the tools available to their international peers, and will offer novice programs with a vision towards societal, economic and sociopolitical advancement of cultures.

## MUDUN UNIVERSITY

CHIYAH / LEBANON  
PROJECT NO: 1307  
BUILT-UP AREA=  
STATUS: DESIGN



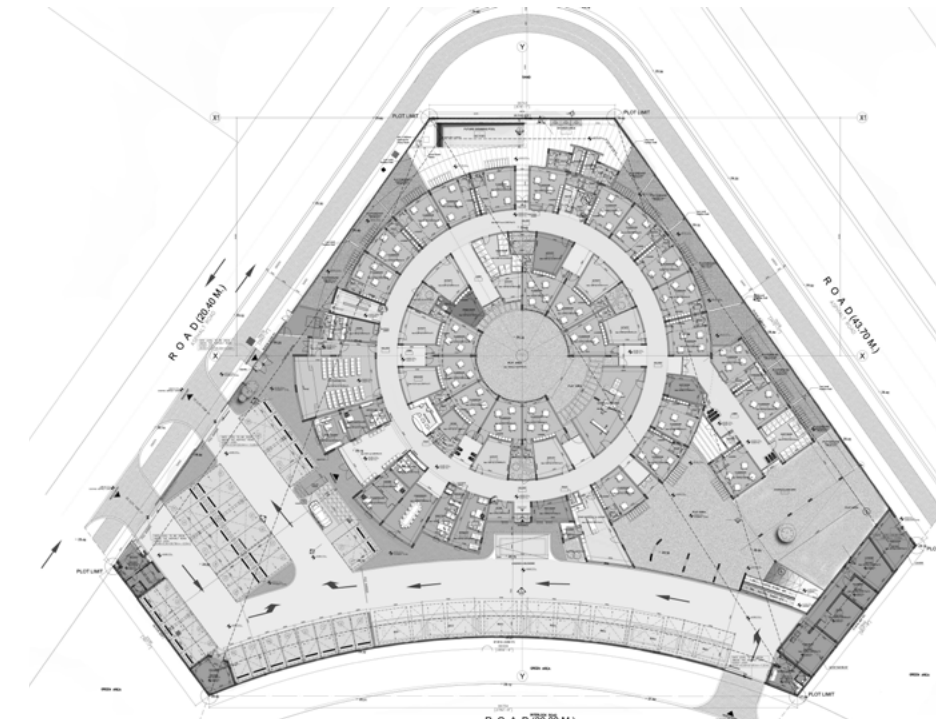
Mudun will constitute a force of change and development that will contribute to the shaping of lebanese comprehensive societal unity and promote the integration of the lebanese people within their country as well as their amalgamation as a society. Mudun university will not only gather students in one place, it will rather join different civilizations with their human and cultural diversity, and will therefore be a mirror reflecting dialogue and interaction between civilizations in contrast to the claim of the clash of civilizations.





## EMIRATES BRITISH NURSERY MOTOR CITY

DUBAI / U.A.E.  
PROJECT NO: 950  
BUILT-UP AREA=  
STATUS: DONE

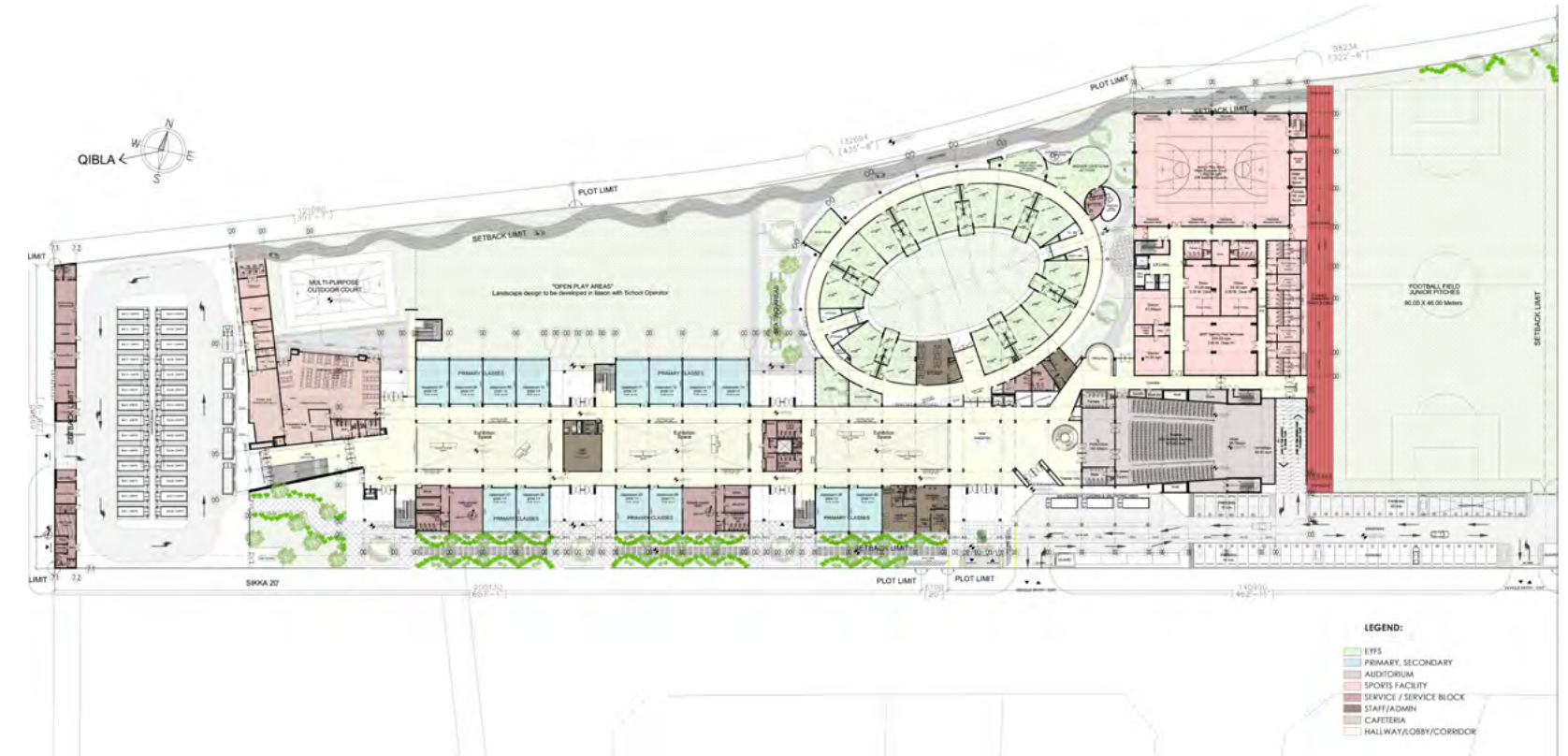






## NORD ANGLIA COLLEGE

DUBAI / U.A.E.  
PROJECT NO:  
BUILT-UP AREA=  
STATUS: DONE





- 5 STARS HOTEL
- BOYS SCHOOL
- BOYS SCHOOL INTERNATIONAL
- TRAINING
- GIRLS SCHOOL
- GIRLS SCHOOL INTERNATIONAL
- SPECIAL NEEDS CENTER
- RESIDENTIAL AREA
- NURSERY



## EDUCATIONAL COMPOUND

RIYADH / SAUDI ARABIA  
PROJECT NO: 1272  
BUILT-UP AREA=  
STATUS: DESIGN

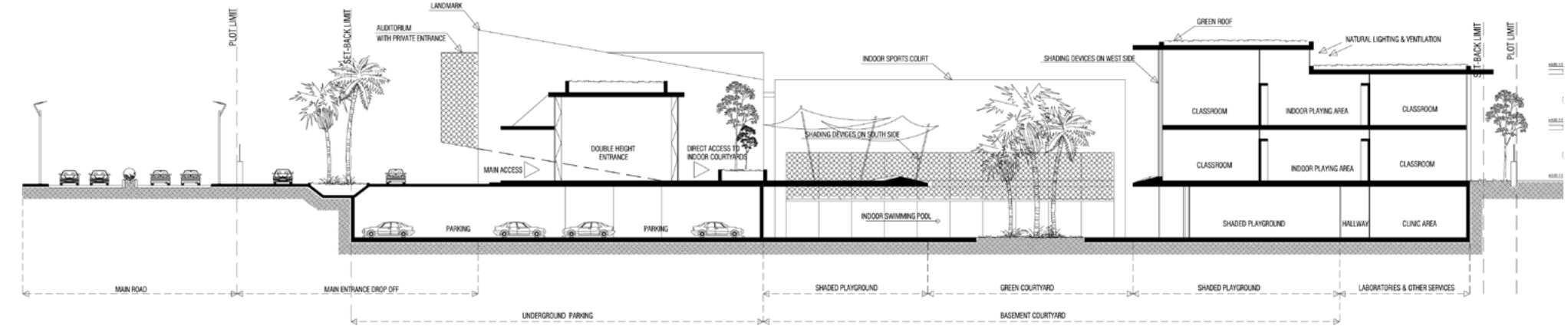






## AIN KHALID SCHOOL

DOHA / QATAR  
PROJECT NO: 2070  
BUILT-UP AREA=  
STATUS: DESIGN







## UNIVERSITY OF CENTRAL ASIA

NARYN / TAJIKISTAN  
PROJECT NO: 1264  
BUILT-UP AREA=  
STATUS: DONE





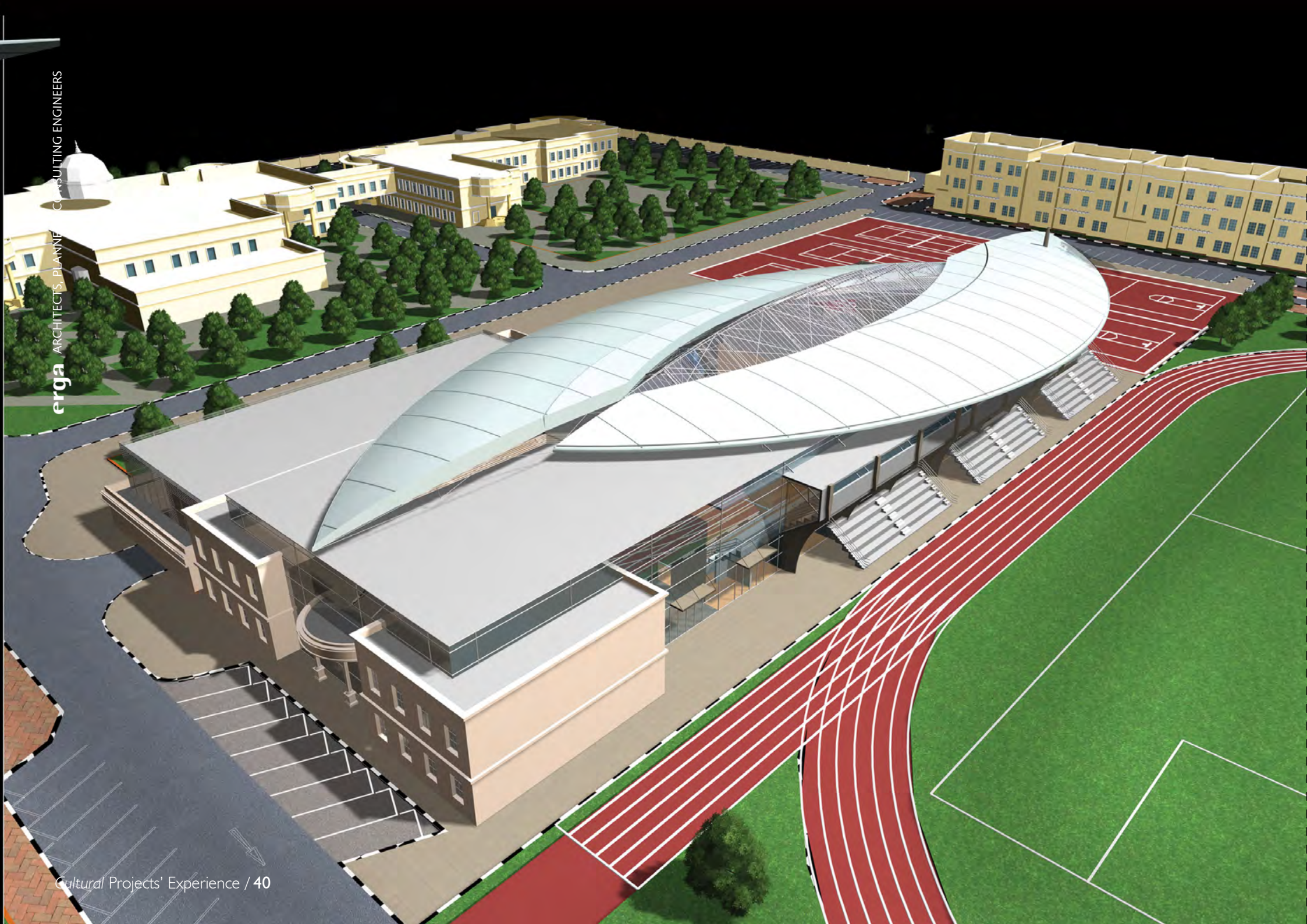
## UNIVERSITY OF CENTRAL ASIA

KHOROG / TAJIKISTAN  
PROJECT NO: 1263  
BUILT-UP AREA=  
STATUS: DONE

---







**AUD SPORTS FACILITY**

DUBAI / U.A.E.  
PROJECT NO: 961  
BUILT-UP AREA=  
STATUS: DONE

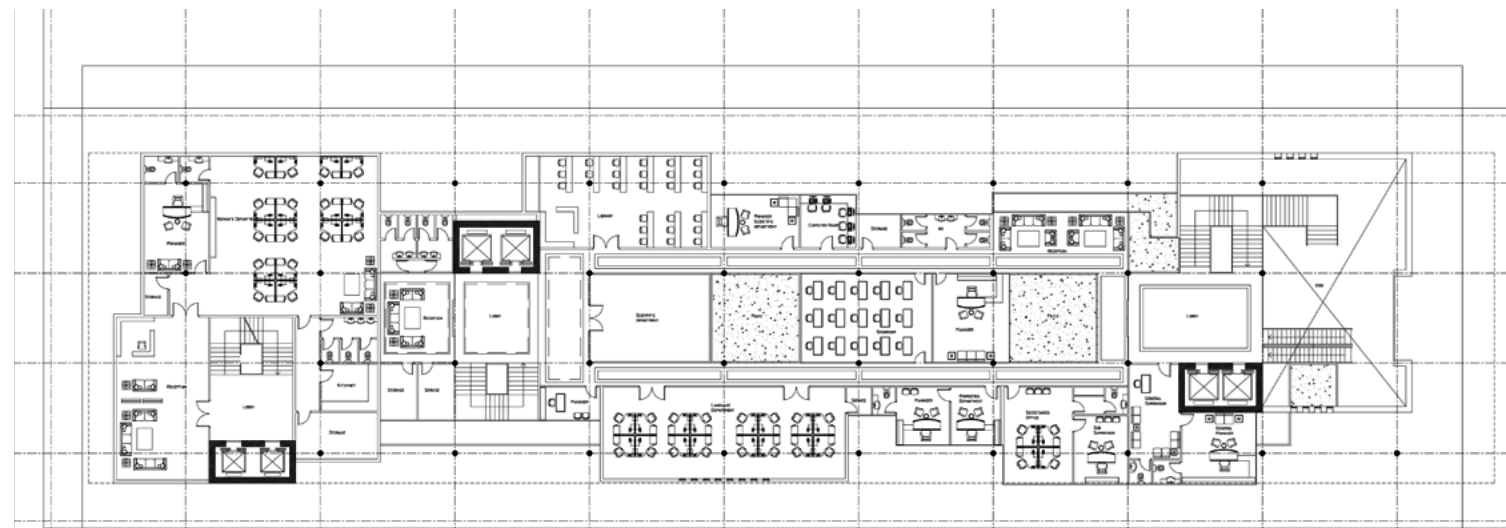






## ISLAM TODAY

RIYADH / SAUDI ARABIA  
PROJECT NO: 1275  
BUILT-UP AREA=  
STATUS: DONE







## RENOVATION OF AL AHLIA SCHOOL

MINA AL HOSN / LEBANON  
PROJECT NO: 898  
BUILT-UP AREA= 6565m<sup>2</sup>  
STATUS: FOLLOW-UP



BEFORE



AFTER





MATERIALS:

- A- White monocouche : neutrality.
- B- Natural local stones to increase integration.

- C- Glass to ensure transparency and dialogue with nature.
- D- Steel to recall the contemporary sculptures' material.

**BASBOUS RACHANA 312**

RACHANA / LEBANON  
PROJECT NO: 1720  
BUILT-UP AREA= 2645m<sup>2</sup>  
STATUS: DESIGN

—

- 1- Thin frame to straddle the exceptional view and the exhibited sculptures.
- 2- Transparency from side to side.
- 3- Skylight to lighten the basements.
- 4- Narrow openings: light infiltration.
- 5- Wide openings : sea side + Shadow devices (perforated panels).
- 6- Garden exhibition extension
- 7- Outdoor exhibition platform.
- 8- Water feature to increase the interaction with nature.
- 9- Pedestrian indoor ramp: " Art promenade" .
- 10 - Adjustable louvers.

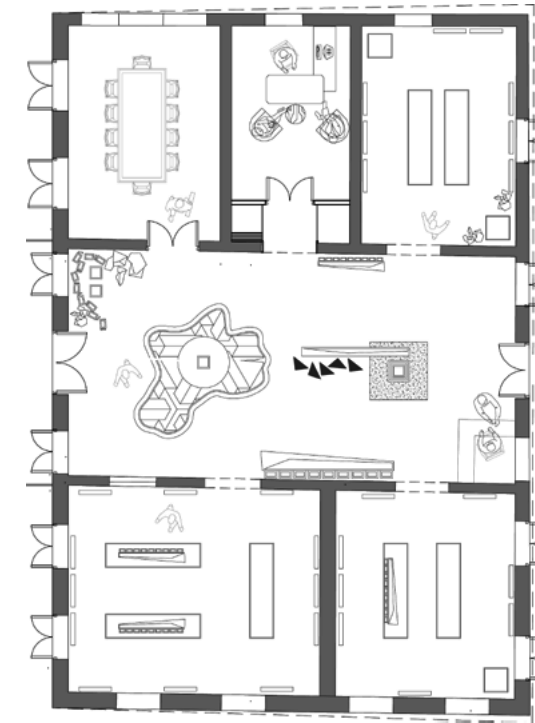






## PHOENICIAN MUSEUM

JBEIL / LEBANON  
PROJECT NO: 2494  
BUILT-UP AREA=  
STATUS: DESIGN





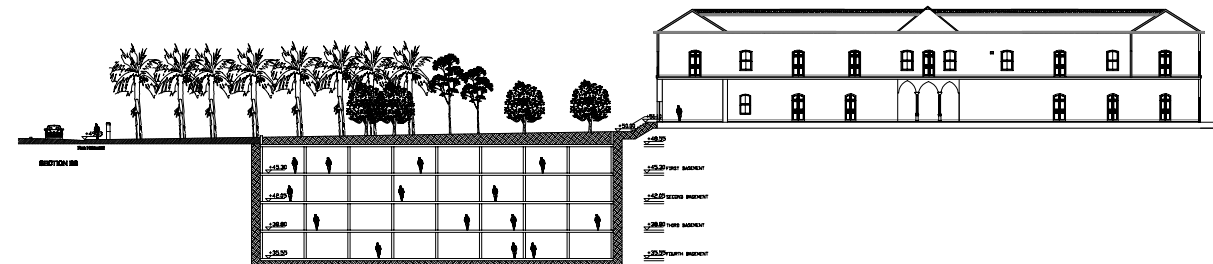


## BEIRUT NATIONAL LIBRARY

BEIRUT / LEBANON  
PROJECT NO # 1594  
BUILT-UP AREA= 14013m<sup>2</sup>  
STATUS: DONE



Located in Beirut, facing the Sanayeh Gardens neighboring the Ministry of Interior and in proximity to the Lebanese Central Bank, the library will inhabit a recently vacated Faculty of Law building of the Lebanese University. With historic value, the building has a great deal of character that the Lebanese National Library will build on and expand.





## ERGA WORLDWIDE

### LEBANON

Naccache, mar mansour street,  
gebrayel building

Tel +961 4 524 124  
Fax +961 4 524 224

p.o.box 70344 antelias,  
erga@erga.com

### SAUDI ARABIA

Saudi lebanese co. for project management  
al olaya st, al akaria center II, 3rd fl 302

p.o.box 301539  
Riyadh 11372 KSA

Tel +966 1 419 0044  
Fax +966 1 419 1044  
ergasaudi.com

### QATAR

Suhaim bin hamad st, al mana towers, 6<sup>th</sup>  
floor office B

tel +974 4444 6800 / 7800  
fax +974 4444 6300

p.o.box 16389 doha,  
ergaqatar.com

### DUBAI

Erga progress engineering consultants  
OUD-METHA BURDUBAI

Al Naser Offices Bldg 4th floor - 401  
p.o.Box: 30509 Dubai U.A.E.

Tel +971.4.3575557  
Fax +971.4.3575556  
ergaprogress.com

