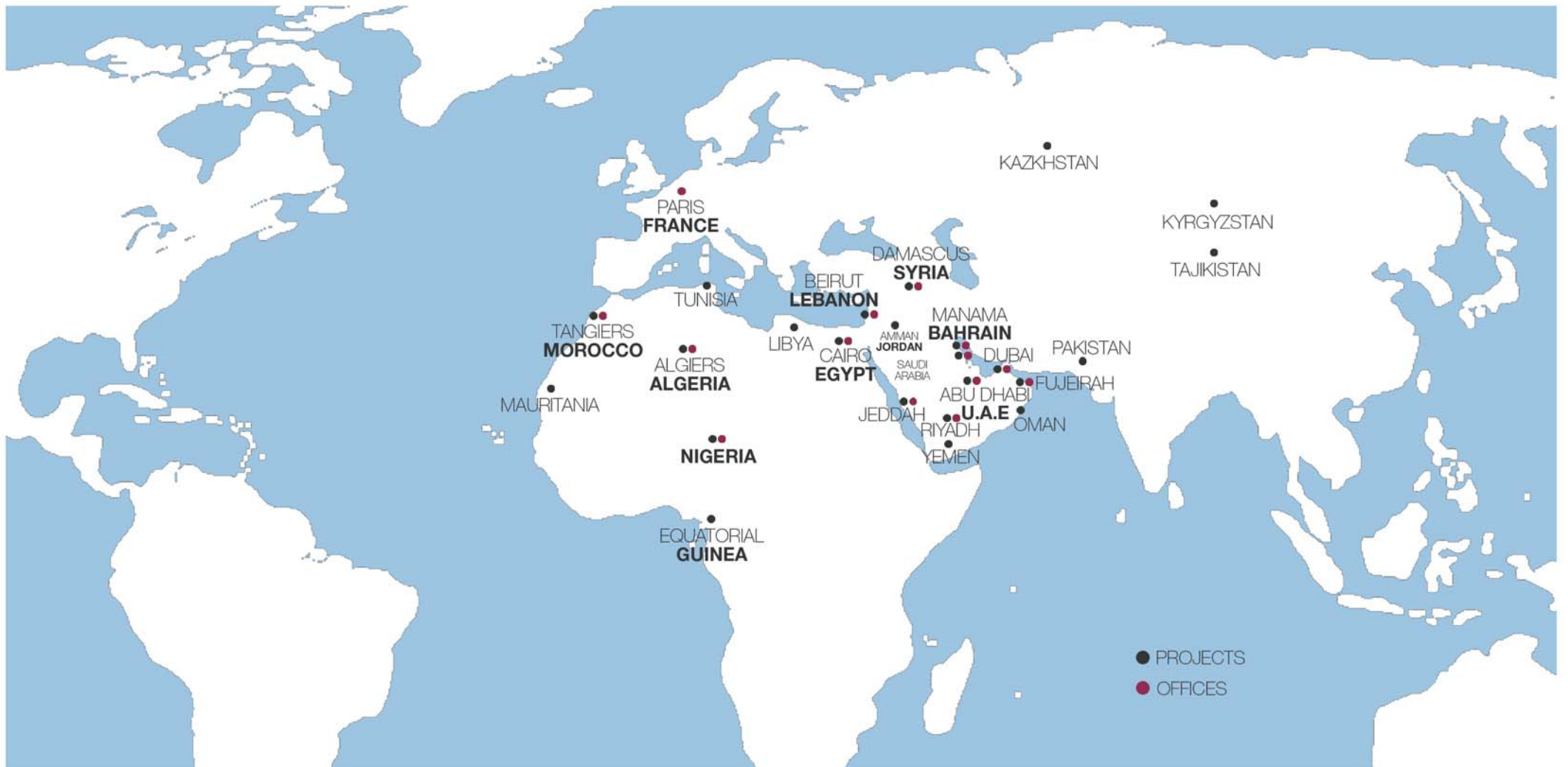


erga NEWS



Elie and Randa Gebrayel
Chairman and Vice Chairman

Elie & Randa

A WORD FROM ELIE AND RANDA GEBRAYEL



Dear Friends,

Since we have been selected to be one of the participants in INFDEX 2010 exhibition, we decided to grasp this opportunity to customize "erga news" and showcase some of our most important Qatari projects.

Our designs have been worked meticulously to fit our Qatari clients' needs and requirements respecting their culture while including our creativity. Consequently, our projects in Qatar vary from urban planning to high rise and low-rise buildings, private villas and palaces, and leisure and commercial complexes. Other than the architectural know-how, we have specialized experts in many related sectors such as engineers, interior designers as well as landscape designers. All our teams are working together in harmony to offer Qatar the best development seeking to exceed all its different expectations.

Moreover, we are proud to present a few of our most recent and most important international projects some of which are competitions that we have won such as Credit Libanais Headquarters, Bank of Syria & Overseas Headquarters, and Al Hada Resort. We have also listed some projects we have worked on in collaboration with international architects such as LAB, RUR, ARQUITECTONICA, and ARATA ISOZAKI. Enjoy.



SPECIAL ISSUE INFDEX 2010, QATAR

PLEASE HELP US RECYCLE THIS NEWSLETTER. AFTER READING, KINDLY PLACE IT IN THE **RECYCLE BIN** OR LET SOMEONE ELSE ENJOY IT. DO YOUR BIT FOR THE **ENVIRONMENT. SAVE A TREE.**
THANK YOU.

erga head office
naccache, mar mansour st
tel +961 4 524 124
fax +961 4 524 224
p.o.box 70344 antelias



RAMAD TOWER 01
HOTEL & RESTAURANT



MARINA 08 02
HOTEL & RESTAURANT



AL FERDAN TOWER 03
COMMERCIAL



DOHA HOTEL & 04
APARTMENTS, COMMERCIAL



MARINA 09C 05
COMMERCIAL



OUR PROJECTS IN QATAR

A HIGHLIGHT ON SOME OF OUR MOST
IMPORTANT PROJECTS LOCATED IN QATAR



ABOVE THREE PERSPECTIVES:

- > **GOLDEN LANDS** - LOCATION: LUSAIL, TYPE: OFFICES
- > **ENERGY CITY II** - LOCATION: DOHA, TYPE: URBAN PLANNING
- > **FOX HILLS** - LOCATION: DOHA, TYPE: URBAN PLANNING



PROJECT:
FOX HILLS - 10 LOTS
LOCATION: DOHA
TYPE: URBAN PLANNING



QATAR MEDIA CITY 01
LUSAIL
TYPE: URBAN PLANNING



01



02

DOHA WATERFRONT 02
DOHA
TYPE: COMMERCIAL



03



04

DOHA BUSINESS VILLAGE 03
DOHA
TYPE: COMMERCIAL

ALI AL ATIYAH MALL 04
DOHA
COMMERCIAL

QATAR OFFICES BUILDING 05
LUSAIL
TYPE: COMMERCIAL



05



06

WEST BAY COMPOUND 06
DOHA
TYPE: CAMPUS

AL RAYYAN MALL 07
DOHA
TYPE: COMMERCIAL



07

CLIENT: QATARI DIAR

IBN HANI BAY RESORT 01
LATAKIA, SYRIA
TYPE: COMMERCIAL

AL HOUARA RESORT 02
MOROCCO, AL HOUARA
TYPE: TOURISM

CONVENTION CENTER 03
DAMASCUS, SYRIA
TYPE: COMMERCIAL

NOUAKCHOTT RESORT 04
MAURITANIA
TYPE: TOURISM

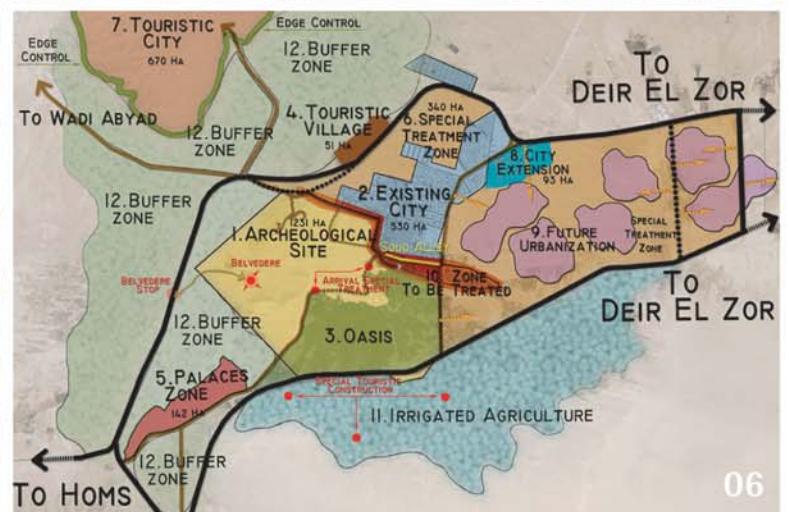
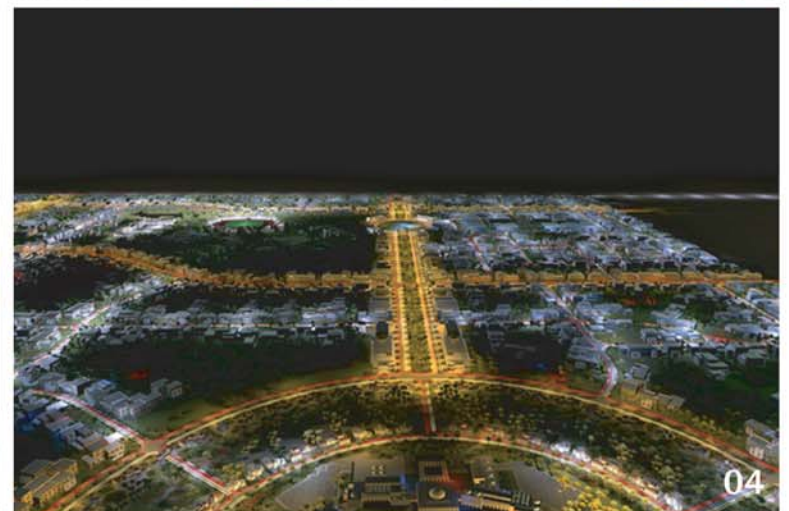
DAMASCUS DEVELOPMENT 05
DAMASCUS, SYRIA
TYPE: URBAN PLANNING

TADMUR MASTER PLAN 06
TADMUR, SYRIA
TYPE: TOURISM

TADMUR DEVELOPMENT 07
TADMUR, SYRIA
TYPE: URBAN PLANNING

DAMASCUS HOTEL 08
DAMASCUS, SYRIA
TYPE: COMMERCIAL

PROJECTS LOCATED OUTSIDE QATAR



SAMA BEIRUT

ACHRAFIEH, LEBANON
32,000 m2, 2009

"IT ONLY FINISHES WHERE THE HEAVENS BEGIN..."

> Sama Beirut is located in proximity to the Beirut Central District, on a piece of land at an altitude of 74m, stretching at a grand height of 186m, the total altitude amounts to 260m, which is at the same level as Fanar for example, but in the heart of Beirut. From this tower, you can enjoy 360 degree views, starting from Mount Lebanon, all the way to the bay of Jounieh, along the sea shore, to the port of Beirut, and the BCD as well as the rest of the Lebanese capital. The fundamental design begins with four sheets, each folded over, enveloping and rising above the one before it, giving the illusion of stepping up towards the heavens. This unique blend in volume results in breathtaking panoramic views. Redefining luxury living, Sama Beirut towers graciously over the city skyline, leaving an unforgettable presence noticeable from land, sea and air, aiming to be a green building with a LEED certification. It only finishes where the heavens begin...



BEITMISK

SAKIET-EL-MISK, LEBANON
655,000 m2, 2009

> BeitMisk is a residential community combining 13 plots spreading over a fairly steep topography in an exquisite mountainous location in the Northern Metn district of Lebanon.

ZONING

The original idea of the conceptual master plan of BeitMisk was to create a unique development capitalizing on the site's hilly topography which provides wide exposure to beautiful sceneries and views of the Mediterranean Sea and the capital city of Beirut. This concept enhances the sense of integration and cohesiveness within the community while providing a balance between the built-up areas and open spaces, and developing a residential complex that is as sustainable and environmentally responsible as possible.

ARCHITECTURAL CHARACTERS

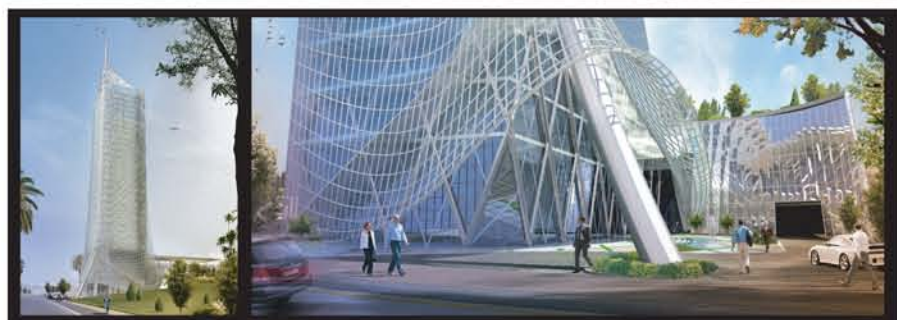
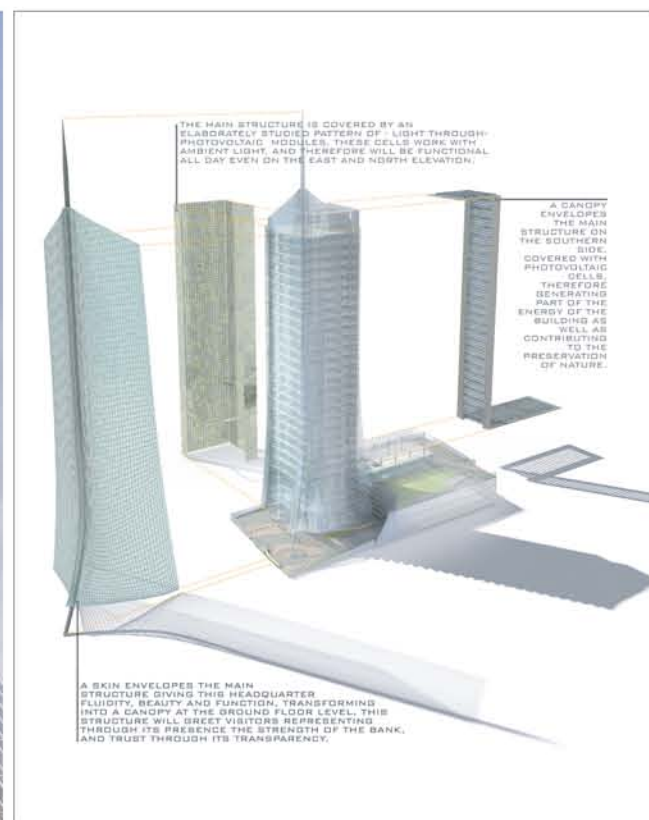
Erga proposed two architectural styles for the residential elements: the traditional Lebanese and the contemporary. The master plan's objective is to create a village-like development and a sense of place where the resident would have a sense of belonging. Although the project will comprise of different types of residential units and public open spaces, they will all combine to create a single cohesive and memorable development.

CREDIT LIBANAIS HEADQUARTERS

ACHRAFIEH, LEBANON
48,622 m2, 2009

WINNING COMPETITION CONCEPT

> The project is at its base a typical high rise building, in simple language: a box. A free flowing mesh envelops this box, while a curved column ascends from under this mesh, raising, manipulating and defining it, characterizing the project by fluidity and elegance through this graceful inviting structure, and rendering it as one that reflects individuality. A curved glass wall lies behind the main structure, concealing the parking and technical spaces, and acting as a backstage reflecting the life and the energy within the building, while the space in between this wall and the tower will be the social interaction heart of the project.



BANK OF SYRIA & OVERSEAS HEADQUARTERS

DAMASCUS, SYRIA
48,622 m2, 2009

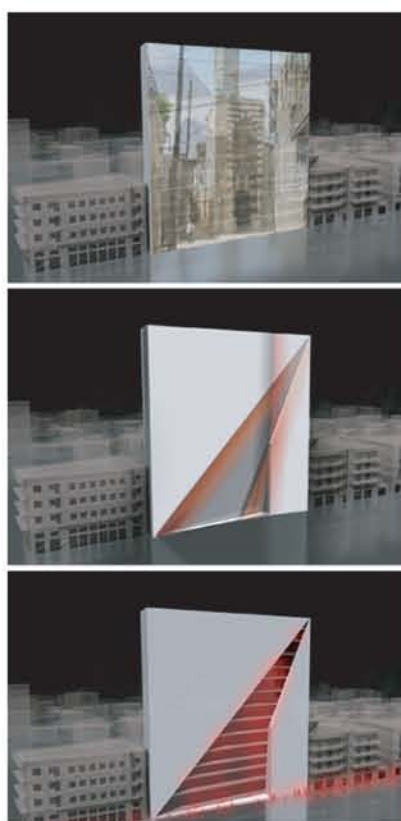
WINNING COMPETITION CONCEPT

1- Contrast that creates harmony

The country's history is portrayed through the reflective material on the main elevation that aims to mirror its rich surroundings. Communication between the old and new is achieved, not only by integrating the project with the city's environment, but also by blending it within its natural context.

2- An iconic building

The reflective quality links the project to the country's proud past and represents the strength of the bank. Also, at the center of the elevation, the transparency symbolizes trust and confidence. In its completion, the building will appear as an iconic addition to this distinctive city.



3- A commitment to public accessibility

Catering to the bank's clients first and foremost, the entire volume of the building was intrinsically planned to ensure constant communication and interaction between the bank and the public.

CONCLUSION

> The BSO building is set to transform the Damascus landscape while reflecting the uniqueness of the city and espousing its traditional character and surroundings, leaving an indelible mark on the skyline and setting new architectural standards for the future.

THE GREEN RIVER

BEIRUT, LEBANON
32,000 m2, 2010

> The project is an environmentally conscious and daring mission undertaken by the Green Party of Lebanon, aiming to the transformation of Beirut River from an environmentally and ecologically poisoning artery cutting through Beirut City into a green spine connecting the different neighbourhoods and serving as breathing space, entertainment, social encountering and activities. The intervention area starts from Kanater Zbeydeh up to the sea in the Dora region covering a total length of 8.5 km of different river aspects and characteristics as well as different urban, industrial and natural surrounding environment. This project involves the private as well as the public sector to transform a danger and a threat to the city into a green heart, a public attraction, a green river that links the mountains to the sea.



AL HADA RESORT

AL TAIF, KSA
153,000 m2, 2010



WINNING COMPETITION CONCEPT

> The particularity of the site in terms of location, topography, and views was the leading guide to the project's concept. The master plan was designed to respond to the site's characteristics as a destination while maintaining the privacy of the residents. Hence, a central core was created, that will articulate the hotel, some retail and entertainment uses as well as optional furnished apartments uses that can be operated by the hotel or separately.



014 BUISNESS BAY 01

In collaboration with: RUR



BEIRUT GARDENS 02

In collaboration with: ARATA ISOZAKI



K.A.F.D 03

In collaboration with: LAB



GUARDIAN TOWERS 04

In collaboration with: LAB



PROPERTY PLUS TOWERS 05

In collaboration with: ARQUITECTONICA



ROLEX TOWER 06

In collaboration with: SOM



AL SWAILEM TOWER

RIYADH, KSA

54,187 m2, 2009

> The project is a 5 star hotel located in the middle of the city of Riyadh, along Olaya road on a land area of 7,125 square meters. The project consists of a multipurpose hall, business center, health clubs, & 301 guest rooms including Presidential and Royal suites with their private club areas. The tower has been designed by Erga Group with 30 floors and 3 basements for parking use and other technical services. Erga has focused on the attraction but not on extravagance, on a welcoming aspect not exaggerated and on the transparency through the use of light materials. The Crown Plaza Hotel has been designed and developed in a contemporary architectural style, using innovative material in compliance with the regulations of the Intercontinental Hotel Group (IHG).



LES RESIDENCES DES PINS

CHERAGA, ALGIERS

85,000 m2, 2010

This concept design allows the creation of internal courtyards which let the apartments benefit from an optimal natural light and ventilation within a nice view to the gardens and surroundings. The project is consisted of 10 luxury residential buildings 420 simplex and duplex apartments, two commercial blocs with a shopping mall, luxury shops and a sports center with indoor pool, a kindergarten playground, restaurants and outdoor cafe.

> Located in Cheraga, Algiers at a place called "les grands vents", the mixed-use complex occupies a total built-up area of 85,000 m2. Moreover, it is composed of two inverted U-shaped buildings hence being the main concept of the project.



LES RESIDENCES DES JARDINS

CHERAGA, ALGIERS

74,816 m2, 2010

> Along its internal Zen gardens, the elegant "Résidences Des Jardins" is located minutes away from Dar El Diaf occupying a surface of 11,750 m2. The project is composed of 12 buildings, ten floors each and two apartments on each level. Furthermore, independent commercial boutiques are located on the ground floor for elite clienteles, as well as private and public parking spaces, an area for games for the kids to enjoy, and secured fire escape exits in the entire buildings in case of emergency.

