



Erga won 17 medals in this year's Beirut Corporate Games

# erga NEWS

ISSUE #10 - 2014



## DISASTER BUILDING - GHINEH 287 FRANSABANK-BLC CONTINUITY SITE PROJECT



LOCATION  
Ghineh, Lebanon



TYPE  
Offices

STATUS  
Active

DESIGNED BY



ARCHITECTS  
Elie & Randa Gebrayel  
In collaboration with:



Architect (CONCEPT)  
Maram Atallah



Architect (DEVELOPMENT)  
Maguy Anis

The primary objective of the project is to build a "business continuity site" for Fransabank and BLC Bank to cover a period of 3 years of total interruption of one or both of the head offices. Located in Ghineh along the outskirts of Jounieh, the project is characterized by its elegant and minimal architecture. The design is highlighted by an inviting cantilevered volume that defines the entrance to the project; a water plan sits below this cantilevered volume doubling through its reflection the impact and grandeur of the entrance.





LOCATION  
Doha, Qatar  
TYPE  
Offices  
STATUS  
Waiting

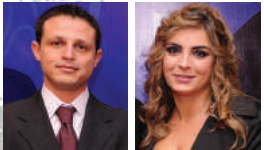
# ENERGY CITY OFFICES BUILDING DEDICATED TO THE HYDROCARBON INDUSTRY

DESIGNED BY



ARCHITECTS  
Elie & Randa Gebrayel

In Collaboration With:



Architects (CONCEPT)  
Rabi Aouad & Tamara Youssef



LOCATION  
Brazzaville, Congo  
TYPE  
Private Dwelling  
STATUS  
Active

# VILLA KINTELE

DESIGNED BY



ARCHITECTS  
Elie & Randa Gebrayel

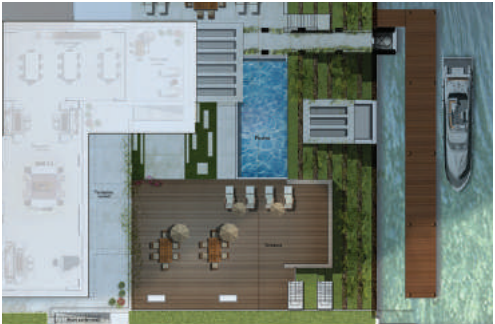
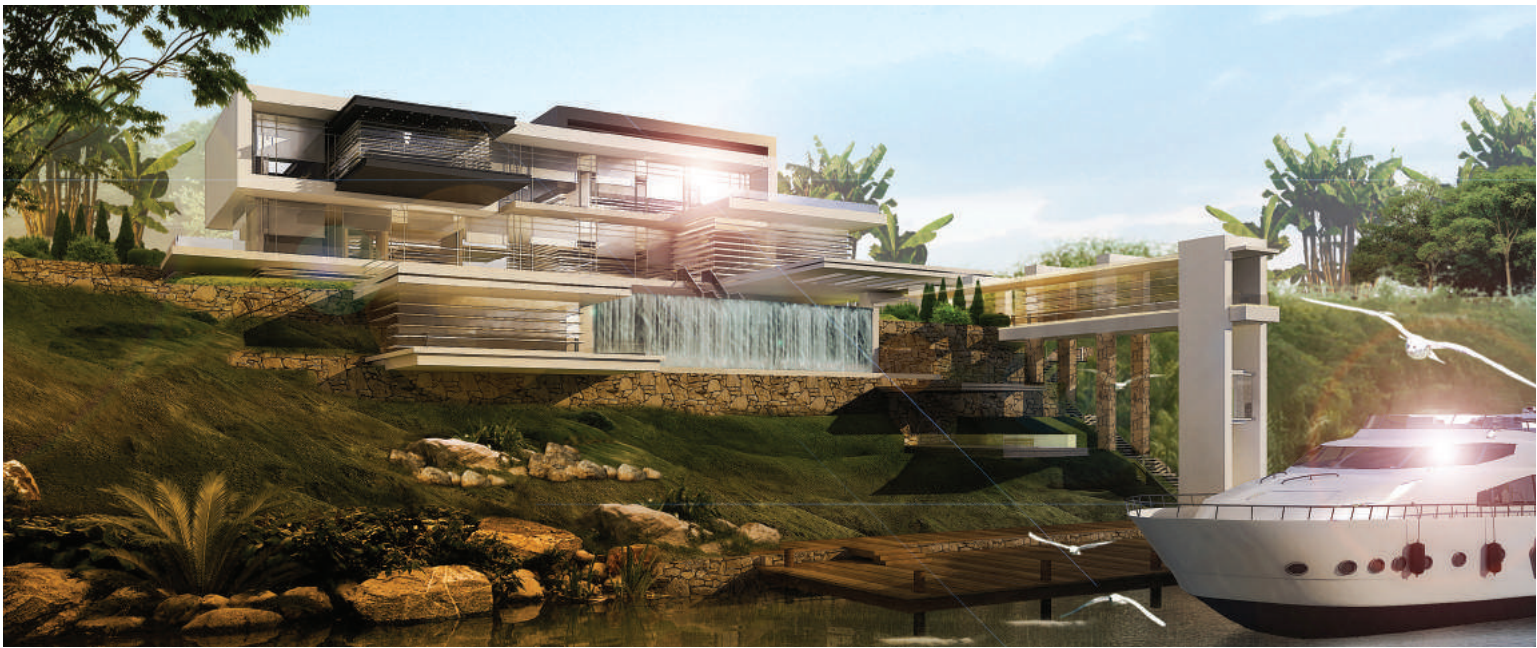
In Collaboration With:



Architects (CONCEPT)  
Andre Chahine & Rony Melhem

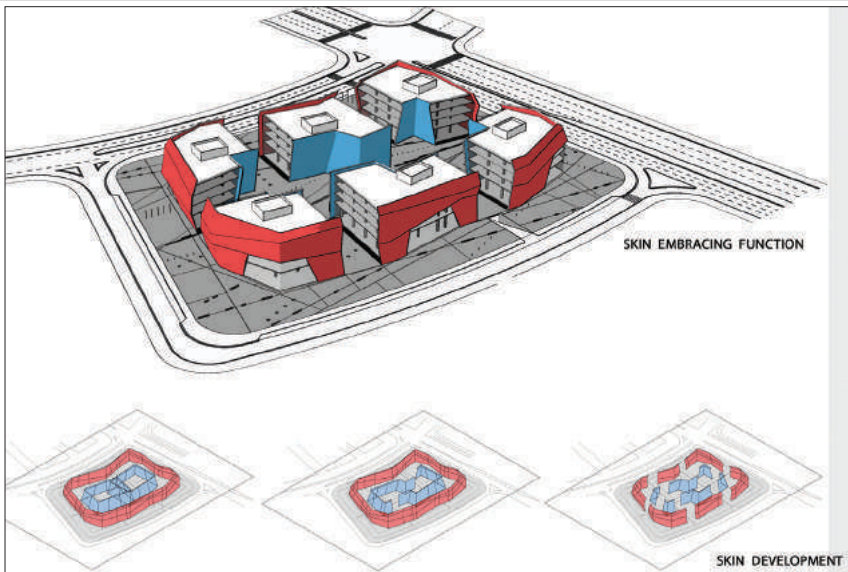


Architect (DEVELOPMENT)  
Joseph Saad





TRY



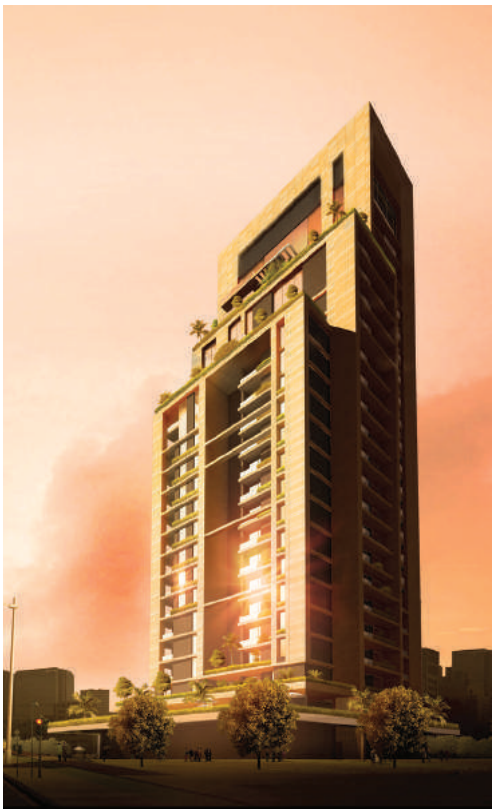
Energy City Qatar is the region's first integrated business hub dedicated to the hydrocarbon industry providing a single point of access to markets and expertise, in what will be the Middle East's home for global players in the hydrocarbon value chain. The project has the full support of the Qatari government and will lead the way in hydrocarbon above ground resource development.

Energy City Qatar forms part of the major new city development, Lusail, which is being developed by Qatari Diar Real Estate Investment Company. In addition to entertainment and business districts, this development will be home to up to 200,000 residents.

The concerned project "Energy City Plots C4 to C9" is incorporated within the Energy City Lusail development. Energy City Plots C4 to C9 project is engaged in maintaining functional efficiency and an overall environmental quality of the master plan. In addition, the project provides a harmonious unity due to its integrated facade and carefully arranged offices.

# LUSAIL MARINA TOWERS

## PLOT 15



Located in the marina district in Doha, the "Lusail Marina Tower" is a luxury 5-star residential building constituted of 116 furnished apartments of different areas: 74 one bedroom apartments, 30 two bedrooms apartments, 10 three bedrooms apartments, and 2 duplexes. The fact that the tower is oriented to face both the marina and the sea provides its clients with a breath-taking view. Not only does it offer them a distinguished location but extravagant facilities and services as well; pool, spa, gymnasium, and business center to name a few.

Moreover, with its 95m height, the building is divided into vertical elements of different heights. These elements are designed to slide in both horizontal and vertical directions reducing the building's enormous size, and hence presenting an elegant shape and proportion. In addition, big glazed elevations and planted terraces give the building a modern look and the interior a refreshing, brightened space fully open to the outside.

|               |   |
|---------------|---|
| LOCATION      |  |
| Lusail, Qatar |   |
| TYPE          |   |
| Residential   |   |
| STATUS        |   |
| On Hold       |   |

### DESIGNED BY



ARCHITECTS  
Elie & Randa Gebrayel

In Collaboration With:



Architect (CONCEPT)  
Fida Tabbah



Architect (DEVELOPMENT)  
Makram Kmeid



WHEN YOU HAND GOOD PEOPLE POSSIBILITY...



AWA  
20



FIRAS KOSSAIFI RECEIVED THE AWARD ON BEHALF OF ANTOINE ABDEL MASSIH

EMPLOYEES OF THE YEAR

ERGA STUDIO

SENIOR ARCHITECT  
DUNIA GHAZI



01

INTERIOR DESIGN  
HASSAN NASSAR



02

ADMINISTRATION

ACCOUNTANT  
SANDY MOUAWAD



01

OVERSEAS (QATAR)  
MARIE THERESE AMMOUN



02

IT & SOFTWARE

SOFTWARE DEVELOPER  
ZEINA NEHME



03

ARCHITECTS OF THE YEAR

01

SENIOR CONCEPT  
ANDRE CHAHINE



02

SENIOR DEV.  
CARLA BOU ABSI



03

OVERSEAS (QATAR)  
NATHALIE SHAFFU



04

OVERSEAS (SAUDI)  
MARTINE EL NAR





# THEY DO GREAT THINGS...

LOCATION  
Le Royal Hotel, Dbayeh, Lebanon

TITLE  
Annual Gala Dinner

DATE  
22 December 2013

ANNIVERSARY  
33<sup>rd</sup>



## ARDS 13

DANY GEBRAYEL RECEIVED  
THE AWARD ON BEHALF OF  
CAROLE ABOU NADER

ZIAD HELOU RECEIVED  
THE AWARD ON BEHALF OF  
ELIE CHAIBAN

PIERRE SAGHBINI RECEIVED  
THE AWARD ON BEHALF OF  
MARTINE EL NAR

GEORGE HADDAD RECEIVED  
THE AWARD ON BEHALF OF  
MARIE THERESE AMMOUN  
& NATHALIE SHAFFU



### ENGINEERS OF THE YEAR 01

STRUCTURAL  
CAROLE ABOU NADER



### 02

QS  
MARIA WEHBE



ERGA MANAGEMENT  
PROJECT MANAGER  
CHRISTIAN OUTAYEK

### 01



TRADE ENGINEER  
MAROUN LICHAA KHOURY

### 02



DEVELOPER

SENIOR DRAFTSMAN  
NELLY SIMONIAN



INSPECTOR  
ANTOINE ABDEL MASSIH

### 03



### 03

ELECTRICAL  
ELIE CHAIBAN



### 04

MECHANICAL  
CHADI SLEIMAN







LOCATION  
Nabey, Lebanon  
TYPE  
Residentiel  
STATUS  
Active

# NOVUS HILLS



DESIGNED BY



ARCHITECTS  
Elie & Randa Gebrayel  
In Collaboration With:



Architect (CONCEPT)  
Sami Ghanem



LOCATION  
The Pearl, Qatar  
LAND AREA  
1491sqm  
B.U.A  
1354 sqm

# AL MANAA PRIVATE VILLA

DESIGNED BY



ARCHITECTS  
Elie & Randa Gebrayel  
In Collaboration With:



Architect (CONCEPT)  
Elie Chebly



Architect (DEVELOPMENT)  
Makram Kmeid



The development will have a basement, a ground floor and 2 floors including a Spa, a Swimming pool and a landscaped area.  
The basement consists of car parking, mechanical tanks, kitchen, storages and maid room with a total basement area of 424 sqm.  
The ground floor level consists of day living area with a total built-up area of 386 sqm.  
The first and second floor levels consist of night living area with a total built-up area of 544 sqm.





LOCATION  
Paris, France

WRITTEN BY  
Francois Gauthier

TITLE  
Architect D.P.L.G, Partner

# ERGA & FRANÇOIS GAUTHIER FGAD



The Heart of the city - Arcachon - France.  
François Gauthier, architectural council to the town, drove the conception and realisation of the reconstruction of the town center.



Francois Gauthier, Architect D.P.L.G  
FGAD, Paris - France

In 1982 whilst designing a palace in Mecca and an office in Riyadh for Mr Rafic Hariri's company, I heard of a Lebanese architect who was no longer drawing his architectural plans on paper! Elie Gebrayel was the first architect in the Middle East creating and circulating his plans on computer.

Being a partner architect at ERGA, is like getting into the rythm of a large cosmopolitan family. It means you can integrate easily, while remaining totally free to take on independent initiatives.

Efficiently structured, ERGA does not impose constraints on methodology to its partners: ERGA knows the importance of developing specific strategies which respond to the expectations of the client and the site.

With ERGA, I wish to share an open development with the world, without imposing ideological architecture which is disconnected from the context of the project. With today's ease of the media's special effects, we prefer the seriousness and realism of an architecture which is built to last.



Innovation Valley - 'Legrand' Group - Limoges - France  
This building for training and large public functions receives Legrand clients from around the world



Deluxe Villa Hotel - Arcachon Bassin - France  
A unique building on an exceptional site, neighbouring the 'Dune du pilat', in Gironde, facing the ocean.

ERGA, a society open to the world, has given me the opportunity to work with a great pool of talents from the best architecture and engineering schools all over the world, with people deeply dedicated to architecture.

ERGA is available 7 days a week, 24 hours a day, the variation in the world time zones, means that ERGA never stops.

Francois GAUTHIER  
Architect D.P.L.G.

## PHOTOGRAPHY: AN ART OF OBSERVATION



WRITTEN BY  
Rabih Shalhoub  
TITLE  
Project Architect - Development Photographer  
Erga Head Office  
Lebanon

"Photography takes an instant out of time, altering life by holding it still"  
— Dorothea Lange

Pictures capture a moment that becomes part of the collective history of the time you are living in. The reality expressed in a photograph is selected by its author. The social context, the atmosphere, the experience of the place are elements that constitute the picture. Therefore, the message conveyed there varies depending on the perspective the photographer has of the place at that moment in time. And here comes the importance of photography in architecture as it is a visual tool which provides the framework, time and space, for the architectural project.

Photography is a language...  
Think about: what you want to talk about? what are you interested in? what do you want to show?  
Use your knowledge through time and light to create a picture of your own.

Photography is a creative art...  
From the reality where people are busy being actors, a photographer is the spectator narrating the story of those living creatures, from a detached point of view.





ERGA REFORESTATION DAY

Erga organized, for its fourth year in a row, a plantation day in Kfardebian in collaboration with Jouzour Loubnan on the 3<sup>rd</sup> of November 2013. Around 200 staff members and their families planted as many trees as they can before having lunch together making it a memorable day for everyone.



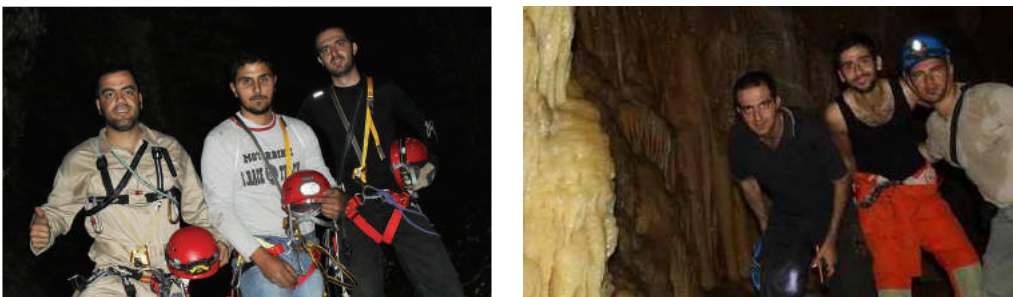
CAMPING IN THE SOUTH



BIKING DAY



CAVING WITH GERSEL



Roy Fakhry, Rabih Shalhoub, Mitri Harmouche and Pierre Khaled, a group of architects and engineers working in Erga, are trained speleologists discovering the caves, chasm and underground rivers of Lebanon with GERSL (Groupe d'Etudes et de Recherches Souterraines du Liban).

ARCHITECT OF THE SEASON



|               |               |
|---------------|---------------|
| NAME          | Marcel Breuer |
| DATE OF BIRTH | 1902 - 1981   |
| NATIONALITY   | Hungarian     |

Marcel Breuer is regarded as one of the most important modernists in architecture and design. His furniture productions remain as influential and popular today, and continue to be mass-produced by esteemed manufacturers. Breuer's most famous chair, the "Wassily," in the words of New York Times, is a manifestation of "modernism's faith in technology, convenience, and the promise of a better life." Breuer's continual interest in new materials and technologies and the re-examination of trends in architectural practice mark him as an important practitioner of modernist theory. Although he abandoned teaching in favor of his own practice, Breuer left an important legacy as an instructor, at the Bauhaus and Harvard, where he and Gropius introduced the International Style on a large scale.



Wassily Club Chair - 1927



UNESCO HQ, Paris - 1952



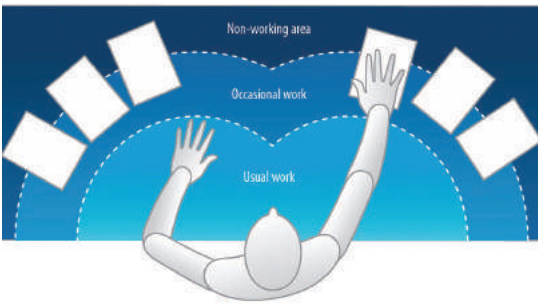
Atlanta Central Library - 1980

LET'S TALK ERGO...AT ERGA  
HOW TO ARRANGE YOUR DESK AND OFFICE

DESK

Items found on your desk should be arranged based on their weight and frequency of use and dispatched as per the three areas composing a desk:

- The primary zone comprising the usual work area where the frequently used items should be placed, such as the keyboard and the mouse.

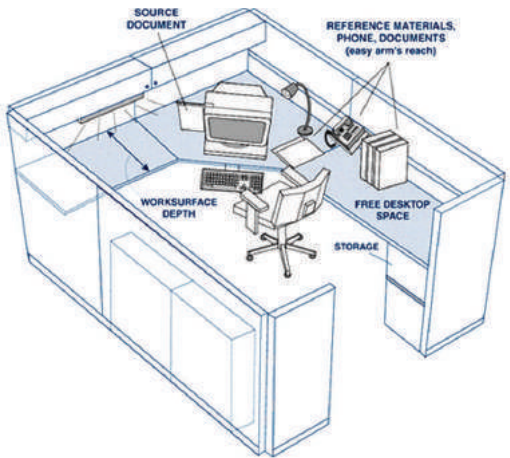


- The secondary zone which is the occasional work space where for example the telephone should be located close to the user.
  - The tertiary zone is considered a non-working area where infrequently used items can be located towards the back of the desk, such as reference material, calculators or staplers.
- N.B.: Heavier items, such as reference books, should be placed between seated shoulder and waist height. A simple point to remember is that the more you use an item the closer it should be.

OFFICE

The following are some helpful hints on setting up your office:

- Files and books that are used most often should be kept within reach.
- Files should be arranged in a filing cabinet. Frequently used files and heavy books should be accessed while standing and placed on the middle shelf or around elbow level.
- This should reduce the amount of bending and reaching required.
- Filing cabinets should be located so you have to stand up from your chair and walk to them. If the cabinet is far enough away you may have to stand to reach it. You will be less likely to twist and reach which may result in injury.
- File and desk drawers should be kept closed when not in use to avoid trips, bumps and scrapes.
- Shelf depth should allow for a comfortable reach.
- Equipment such as printers or fax machines should not obstruct movement.



Source: Office Ergonomics Handbook, 5th Edition, Occupational Health Clinics of Ontario Workers Inc.



Follow us on facebook and become a fan of erga group where you can find all our latest news and updates.