



erga NEWS

SPECIAL INTERIOR DESIGN ISSUE #12



A WORD FROM ELIE & RANDA GEBRAYEL

Dear partners,

We are offering you today a special Erga News issue dedicated to the Interior Design Department in Erga highlighting a series of interior projects executed by our talented interior experts. Their expertise became as wide as our projects and with this experience you get more than you expect. Our designers are the best, dealing with the best suppliers worldwide. They provide you the best 3D perspectives showing the design, as it will exactly be in reality. So you are welcome to dig in this issue and discover some examples of our projects especially picked to have an idea of what we are capable of offering you.

The types of projects we design start with residential spaces, corporate offices and banks, religious monuments, healthcare facilities, hospitality projects like hotels, spa facilities and restaurants and much more... We work on different styles going from traditional, neo-classical and contemporary with ultimate luxury in every detail, every picked product and chosen material as per our client's taste and requirements.

Interior design for us is not just a matter of visualizing and sketching design plans as per our client goals. It is not a matter of sourcing products and materials, nor a matter of determining costs and inspecting construction works to ensure alignment with design specifications. Interior design for us is much beyond these technical steps to follow for every project, in every detail. Our interior team is here for you to execute the project that entirely resembles you and your vision. It can't work without the spirit of the client incorporated within the project and the essence of the space we are designing.

This wide range of projects allows you to have an idea of our work and an inspiration for a new project you wish to execute. We hope you like it and whatever are your requirements we are here to execute your dreams!

SORT YOUR MESSY TRICKY OFFICE... ONCE AND FOR ALL!
Our expert explains how to make your workplace ZEN
Use these clever tips to create a Zen office environment. It only takes reorganization and creativity to enhance focus, a productivity boost and be happier.



LOCATION
Amchit, Lebanon
TYPE
Corporate Offices
STATUS
Complete

IPT HEADQUARTERS



DESIGN



Nadine Jamous

3D VIEWS



Hassan Nassar



Ghassan Bou Rached

PROJECT INTERIOR



Yolla Chedid

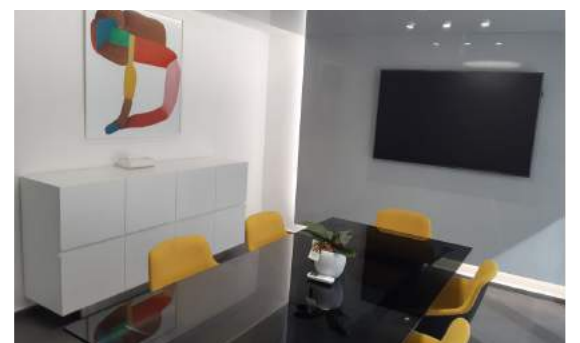
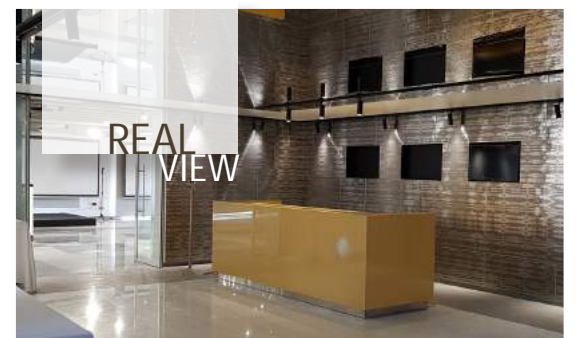
EXECUTION DETAILS & DEVELOPMENT



Rony El Badawi



Rita Rizk



Renovating IPT Headquarters entrance and introducing other functions at basement level was challenging. We needed to make an impact for visitors and we didn't have the luxury in height, so we used mirror effect on ceilings and reflective glass on walls. Involving paintings and screens in different locations empowered the design.



LOCATION
Beirut, Lebanon
TYPE
Mixed-Use
STATUS
Complete

SAMA BEIRUT THE TALLEST TOWER IN LEBANON

DESIGN



Nadine Jamous

3D VIEWS



Hassan Nassar

PROJECT ID & DEVELOPMENT



Nadine Dergham



CUSTOM HANDLE



Artemide Cadmo Wall Lamp by Karim Rashid



EDRA Campana Fernando e Humberto Campana



EDRA



B & B ITALIA MOON SYSTEM SOFA



ZAHA HADID BY SAWAYA & MORONI



BACK PAINTED GLASS BLACK



LAVA STONE FLOOR



MARCA CORONA TILES MADE OF 40% OF RECYCLED MATERIAL

BERYTECH AMCHIT

MICHEL ISSA FOUNDATION

Berytech
The Ecosystem
for Entrepreneurs

LOCATION
Amchit, Lebanon

TYPE
Corporate Offices

STATUS
Execution Phase

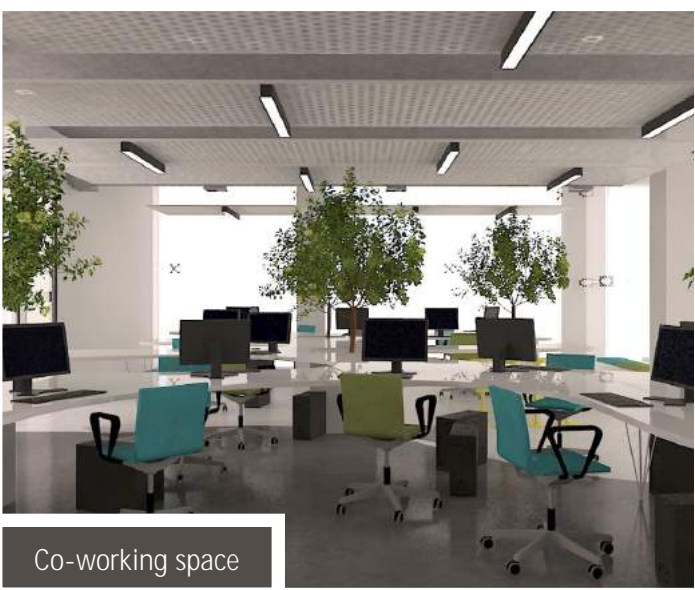


Garden Void



Entrance

A dynamic project designed for students and startup companies. The effect needed was to be colorful, playful, young, fresh and sustainable as shown in project's related pictures.



Co-working space

DESIGN



Nadine Jamous

3D VIEWS



Hassan Nassar



Ghassan
Bou Rached

PROJECT INTERIOR



Yolla Chedid

EXECUTION DETAILS & DEVELOPMENT



Rony El Badawi

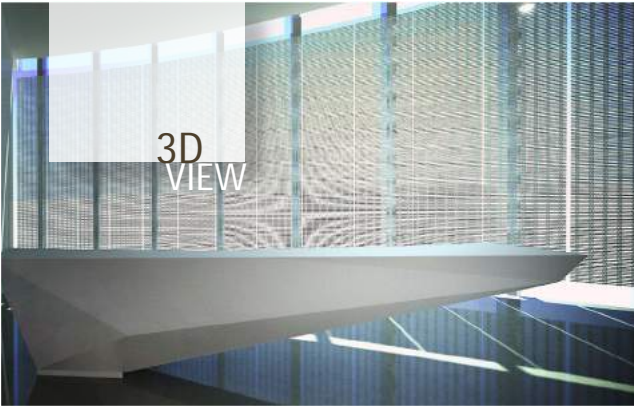


Rita Rizk

SAMA
BEIRUT



3D
VIEW



3D
VIEW



3D
VIEW



REAL
VIEW



REAL
VIEW



REAL
VIEW

Sama Beirut, the tallest tower in Lebanon, among the first LEED projects has made it challenging. Its aim was to let the visitor have the feeling of stepping into the future so we developed a new twist in the painted glass that covered the lift lobby entrance by keeping small lines allowing light to pass through. The development and execution of the construction details was very well done. Moreover, lines were taken from the exterior shape of the tower to develop door handles and interior mesh. The mesh intent was to make shadows in the interior space during the day and is lit artificially to keep the same feeling during night mode.



NAME Mrs. Nadine Jamouss	DES in Interior Design, Lebanese University, Beirut in 1996
TITLE Head Of Interior Design Department	Joined Erga in 2008
LOCATION Beitut Head Office	Became Head of Interior Design Department in 2009

Head of Department ● Senior interior designer
Project interior designer ● Interior designer



ID Team names from Left to Right: Rony El Badawi, Marie-Claire El Khoury, Hassan Nassar, Nadine Dergham, Ghassan Bou Rached, Yolla Chedid, Rita Rizk.

INTERIOR DESIGN DEPARTMENT SCOPE

Erga delivers creative interior solutions that combine design and functionality, using the latest technology. The interior design team works closely with the client throughout the design process, exploring every possibility and assessing the best option.

Erga follows a collaborative and interactive process to create exceptional environments that meet clients' needs using traditional, custom and modern elements to create harmonious designs. Erga's interior experts have a distinctive and modern elegance inspired by the client's needs and spirit.

WORD FROM THE HEAD OF INTERIOR DESIGN DEPARTMENT

"I think if you do something and it turns out pretty good, then you should go do something else wonderful, not dwell on it for too long"-Steve Jobs.

So what's next for the interior design?

Interior design is undergoing its most drastic transformation since the sustainable revolution. Advances made in creative methods, application of data, and building performance are demanding a new interior design approach. The capability of interior architecture to convey messages and stories about spaces builds on brand identity not only in retail and hospitality but across the spectrum of interior settings.


Design is strategy, advocating for an integrated approach to solve clients problem.

Interiors have an important effect on health, a space should respond to our physical and emotional needs through smart design and settings that are healthy through orientation, ventilation, air quality, and views.

The scope of work includes clear cut tasks and involves more open ended types of problem solving. We plan, research, coordinate, and manage enhancements on projects.

It is a multifaced profession that includes conceptual development, space planning, site inspections, programming, communication with stakeholders, construction management and design execution.

We have a variety of projects and a variety of themes and types. Here is a wheel with a spectrum of these themes and types. Choose among our interior spectrum your favorite(s).

	LOCATION Beirut, Lebanon
	TYPE Mixed-Use
	STATUS Concept

KATAMEYA

DESIGN



Nadine Jamouss

3D VIEWS



Hassan Nassar

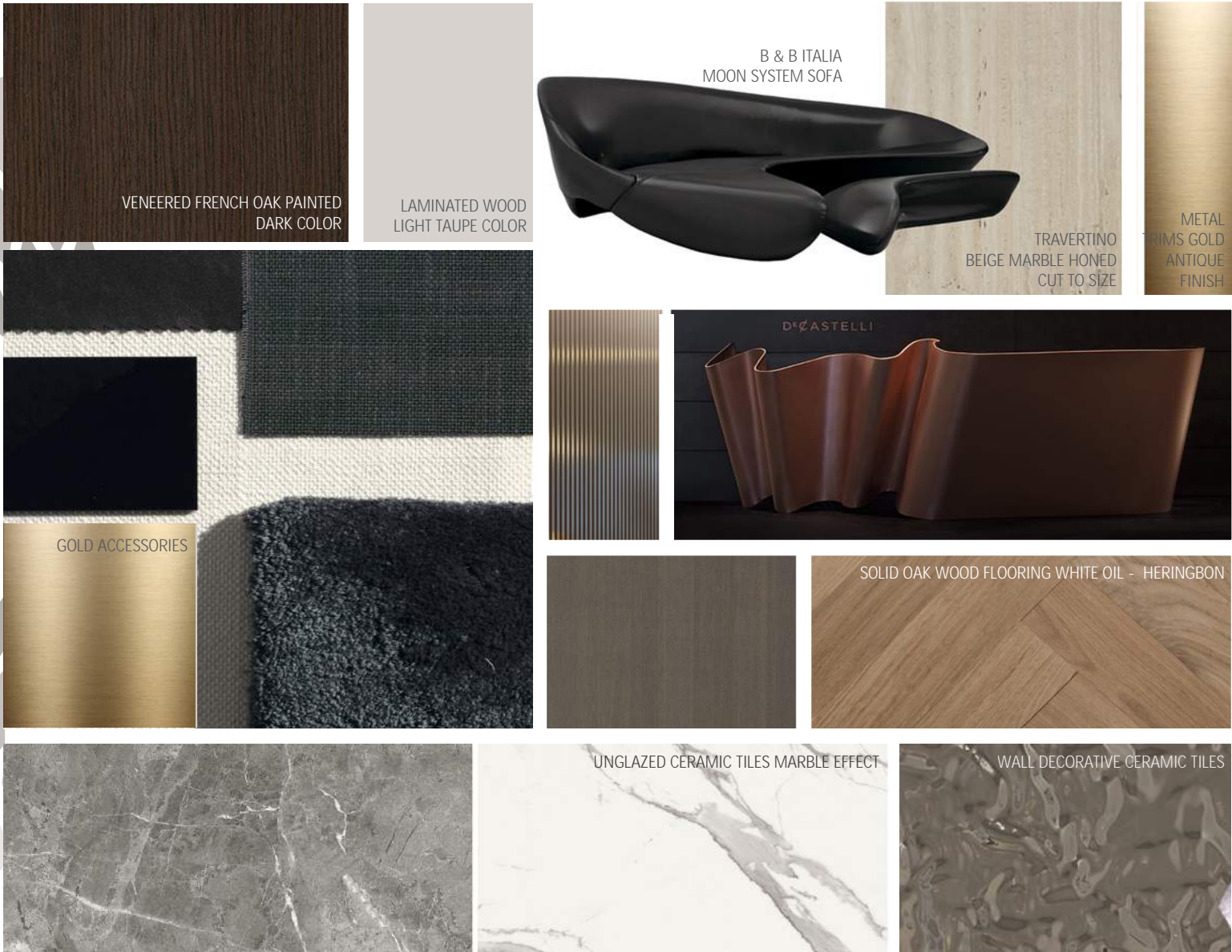


Ghassan Bou Rached

PRESENTATION



Rita Rizk



TYPES & THEMES OF INTERIOR PROJECTS



ONE OF OUR SUBCONSULTANTS

SCHMIDT KITCHENS & INTERIORS SOLUTIONS
KITCHENS and Interior Solutions KHALIFEH TRADING

KHALIFE TRADING CO. FOUNDED IN 1984 WITH A VISION OF PROVIDING KITCHENS WITH LATEST TRENDS, ROBUSTNESS AND ERGONOMIC STANDARDS.

In pursuit of their vision, they partnered with renowned "Cuisines-Schmidt" to service the Lebanese Market. The hallmark of Schmidt's designs is the largest range of products and finishes in Lebanon covering all styles from traditional to contemporary. With 2000+ door combinations and 24 carcass colors. The choice is limitless in accessories, work surfaces, wall units, split-level islands, concealed alcoves, lighting... Schmidt offers environmental-friendly stylish yet practical solutions. Every kitchen is tested in Schmidt's research labs ensuring only highest quality solutions. With Schmidt kitchens and Khalife Trading expertise, the customer has a guarantee of recognized manufacturing quality, timely and perfect installation, and superior after sales service. One of the projects worked with Erga is Byout Ghalboun, Ghalboun, Lebanon.



Katameya Creeks in new Cairo features 44 villas and 22 low rise buildings with 18 different floor apartments, all typologies were conceived by Erga ID department, through a variation of distinguished materials chosen delicately offering real luxury. The project includes a clubhouse and corporate building for offices and retail space.



LOCATION
Dubai, UAE
TYPE
Bank
STATUS
Complete

BLOM BANK FRANCE - DUBAI



DESIGN



Nadine Jamous

PROJECT ID



Maya Saliba

DEVELOPMENT



Rony El Badawi



Nadine Degham

3D VIEWS



Hassan Nassar



Ghassan Bou Rached



The project consisted of Blom Branch at ground floor level and Blom offices at the 26th Floor. The interior of this space was inspired by the curved shape of the building. We have introduced an opposite curve inside the branch to create a self contained form. This dominant form was repeated in different objects like custom rugs and furniture which created a harmony and balance.



LOCATION
Beirut, Lebanon
TYPE
Bank
STATUS
Complete

BLC BANK FIT OUT 35 OLD BRANCHES & NEW ADLIEH BRANCH

DESIGN & DEVELOPMENT



Nadine Jamous



Rony El Badawi



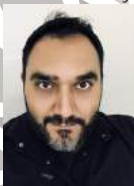
Marie Claire El Khoury



Nadine Dergham



Yolla Chedid



Hassan Nassar



Ghassan Bou Rached



Maya Saliba



Rita Rizk

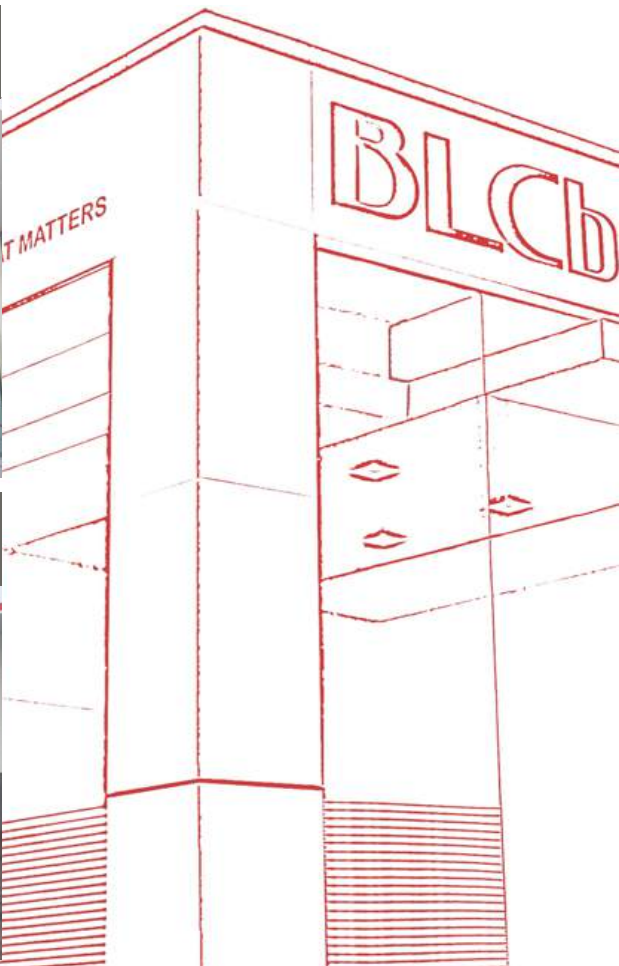
3D VIEWS



Hassan Nassar



Ghassan Bou Rached

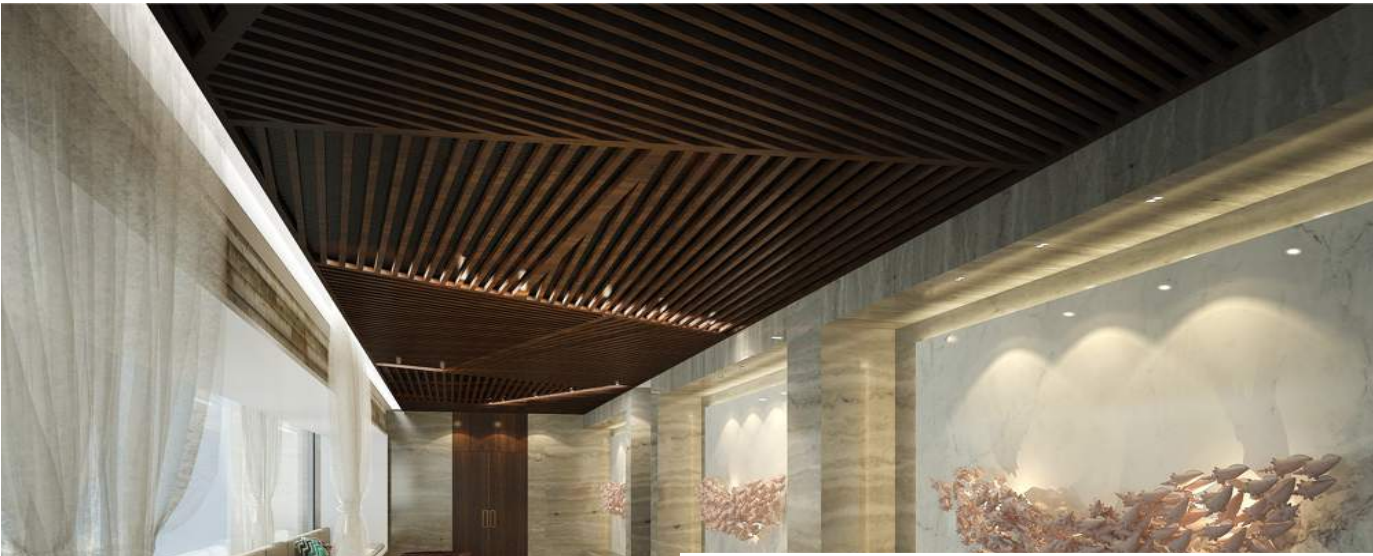


Erga was provided the fit out of over 35 BLC Bank branches. We worked closely with the client and have accomplished his vision and needs for a functional, transparent and modern interior. We built a design strategy and a manual report that works as a guideline for all kind of layouts and facades since 80% of the project was a renovation of old branches and the other part was new locations. After succeeding with our scope, Erga was nominated again to design the new offices of BLC 35 branches (Old/New) in Adlieh, consisting of 7 floors. The interior focused on the working environment as well as the flexibility of the space.

ROTANA HOTEL - Mauritania



LOCATION
Mauritania
TYPE
Hotel
STATUS
Concept



DESIGN



Nadine Jamous

LAYOUTS



Marie Claire El Khoury



Yolla Chedid

FF&E



Stephanie Aatamian

3D VIEWS

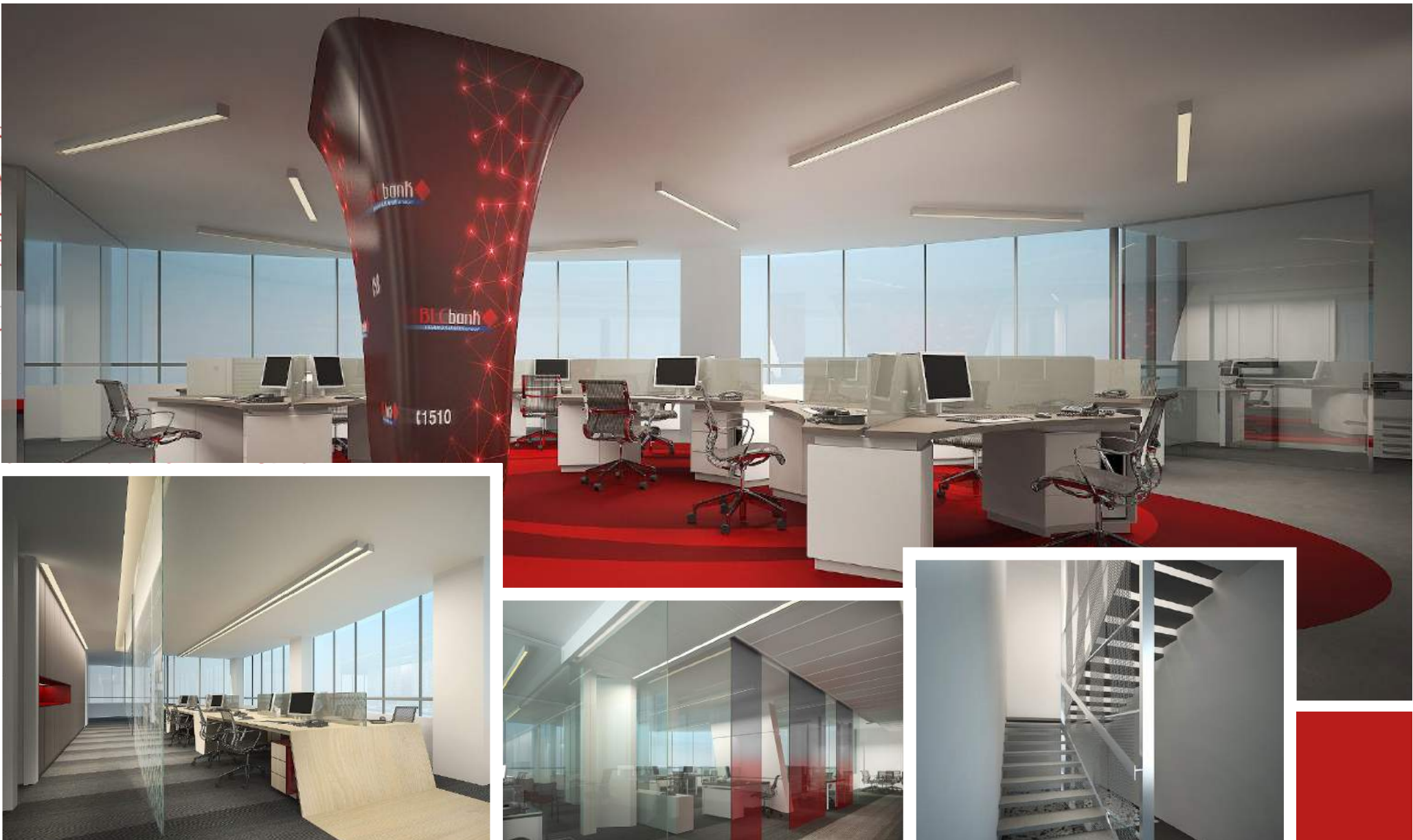


Hassan Nassar



Ghassan Bou Rached

Mauritania is a country with a distinguished culture ,a landscape with natural beauty , and a hospitable people. In our ID CONCEPT we translated these characteristics , with flowing smooth lines opening into modern interiors with a touch of mauritanian culture. The main design is an extension or interpretation of Sea, Sand, Seashells, fishing boats and wild coasts.



IMPORTANCE OF THE CONCEPT PHASE

LIVING

CALACATTA ORO MARBLE

PERPETUA CHANDELIER

BACCARAT SCONCE

CHRISTOPHER GUY BEDSIDE TABLE

RUBELLI WALLPAPER

FLORENCE BED AND BERGERE

POWDER ROOM

BEDROOM

When you work your concept phase as if it was the cover of a magazine.

IMPORTANCE OF THE DETAILS

erga

DETAILS MAKE THE DESIGN

AC AIR SUPPLY

GYPSUM BOARD TYPE C06

43.50mm COLORED LAMINATED GLASS TYPE G02

CONCEALED LED LIGHT TYPE L002

CEILING TYPE C02

OUTSIDE OFFICE

INSIDE OFFICE

The details are not the details. They make the design - Charles Eames.

INTERIOR ARCHITECT OF THE SEASON

NAME
Elsie De Wolfe

DATE OF BIRTH
1865 - 1950

NATIONALITY
American

"I'm going to make everything around me beautiful - that will be my life."

Style setter, actress, business woman, and a free spirit who lived to be different, Elsie de Wolfe blazed the interior design trail in 1910. At age 40, after acting on stage in New York, Elsie found her true gift was in set design. She wanted to find a way to bring that talent into homes that were quite tired and dark with Victorian gloom. She did just that by decorating her own apartment on Irving Place proudly showing it off while handing out her fashionable business cards announcing her new venture, America's first interior decorator. According to The New Yorker, "Interior design as a profession was invented by Elsie de Wolfe". She was certainly the most famous name in the field until the 1930s, but the profession of interior decorator/designer was recognized as a promising one as early as 1900.

Lounge Chairs Pair

Villa Trianon

Trellis, Leopard & Zebra Foyer

LET'S TALK ERGO...AT ERGA
HOW TO MAKE YOUR WORKPLACE ZEN

Ready to fight workplace stress?
Use these clever tips to create a Zen office environment. It only takes reorganization and creativity to enhance focus, a productivity boost and be happier.

LIGHTING
Supplement overhead with a table or desk lamp equipped with a warm-colored light bulb to avoid harsh shadow.

OFFICE COLORS
Add colors to increase positive vibes. Color affects a person's mood and hinders a worker's effectiveness.

CALMING
Choose a rounded corners desk instead of sharp edges. For office chair, find one with arm rest, a solid base and high back.

CLEAR DESKTOP, CLEAR MIND
Declutter your desktop space so it's at least 50% clear. Use file organizers to keep papers off your desk.

OFFICE DECOR
Place a patterned rug underfoot for comfort and a personal touch. Hang artwork that represents your goals.

OFFICE PLANTS CLEAN AIR
Plants in the office improve air quality by removing harmful pollutants. Plants also stabilize humidity levels.

Bring a touch of Zen to:

A CUBICAL OFFICE
Use file folders and organize in vibrant colors to help liven up a gloomy cubicle. Fixed cubicle layout? Hang a small mirror with a view to the entrance and hang a wall art on the wall behind your computer screen for a calmer workspace.

A LARGE OFFICE
Place your desk in the opposite corner of the door with your chair facing the entrance. Add a rug or yoga mat in open space for meditation and light yoga during the breaks. Keep your desk off folders, neat and clean. Think of your desk as a prime real estate

A SMALL OFFICE
No room for a relaxing water fountain? Add a picture of nature for a calming energy. Hang curtains on your window for a softer look and a touch of personality. Choose a small office desk with just few drawers to keep space from feeling cluttered.

A SHARED OFFICE SPACE
Avoid crowded face-to-face or back-to-back. Use an separator or plant to create privacy. Choose chairs, accents, and office decor in subdued colors to avoid sensory overload. Invest in sound-reducing headphones to drown out the noise of a busy workplace.